

# TITUSVILLE High School



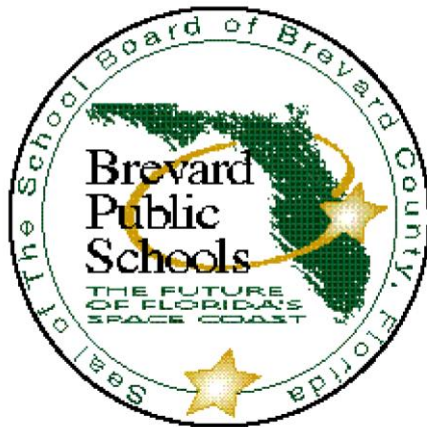
## Instructional Handbook 2012-2013



SCHOOL BOARD OF BREVARD COUNTY  
Educational Services Facility  
2700 Judge Fran Jamieson Way  
Viera, Florida 32940-6601

SCHOOL BOARD MEMBERS  
Dr. Barbara Murray, Chairman  
Amy Kneessy, Vice Chairman  
Dr. Michael Krupp  
Karen Henderson  
Andy Ziegler

SUPERINTENDENT  
Dr. Brian Binggeli



DIVISION OF CURRICULUM AND INSTRUCTION  
ASSOCIATE SUPERINTENDENT  
Cyndi Van Meter

OFFICE OF SECONDARY PROGRAMS  
Dr. Walter Christy, Director

## TABLE OF CONTENTS

|                                                                     | Page |
|---------------------------------------------------------------------|------|
| <b>General Information</b>                                          |      |
| Introduction .....                                                  | 1    |
| Promotion Requirements .....                                        | 1    |
| Graduation Requirements .....                                       | 1    |
| ESE Diploma Options .....                                           | 6    |
| Accelerated Programs .....                                          | 7    |
| District Virtual Instruction .....                                  | 10   |
| Grading Scale .....                                                 | 10   |
| Grade Point Average .....                                           | 10   |
| Honor Graduates .....                                               | 11   |
| Rank-in-Class .....                                                 | 11   |
| FACTS.org .....                                                     | 11   |
| Student Services .....                                              | 12   |
| Bright Futures Scholarships .....                                   | 12   |
| Testing .....                                                       | 12   |
| Post-High School Education .....                                    | 14   |
| Admission to Two and Four Year Colleges and Universities .....      | 14   |
| Mathematics Course Sequences .....                                  | 16   |
| Language Arts Course Sequences .....                                | 17   |
| Science Course Sequences .....                                      | 17   |
| Social Studies Course Sequences .....                               | 18   |
| <b>Career and Technical Education</b> .....                         | 19   |
| CTE Offerings by Location .....                                     | 20   |
| <b>Basic Education Courses</b>                                      |      |
| Art & Drama .....                                                   | 22   |
| World Languages .....                                               | 24   |
| JROTC .....                                                         | 26   |
| Language Arts .....                                                 | 26   |
| Mathematics .....                                                   | 27   |
| Music .....                                                         | 29   |
| Physical Education .....                                            | 31   |
| Research and Critical Thinking Skills .....                         | 32   |
| Science .....                                                       | 33   |
| Social Studies .....                                                | 35   |
| <b>Career and Technical Education Courses</b>                       |      |
| Business Technology Education .....                                 | 37   |
| Diversified Education .....                                         | 37   |
| Family and Consumer Sciences .....                                  | 38   |
| Health Science Education .....                                      | 40   |
| Technology Education .....                                          | 40   |
| Industrial Education .....                                          | 41   |
| Marketing Education .....                                           | 42   |
| <b>Exceptional Student Education Courses</b>                        |      |
| Academics: Subject Areas .....                                      | 43   |
| Supported Level: 9-12 .....                                         | 44   |
| Participatory Level: 9-12 .....                                     | 44   |
| Special Skills Courses .....                                        | 44   |
| Miscellaneous .....                                                 | 45   |
| Therapy .....                                                       | 45   |
| Career and Technical Education for Students with Disabilities ..... | 45   |

---

## DISTRICT GENERAL INFORMATION

### Selecting a Program of Study

Students should select their program of study carefully. Course selections should be made to fulfill requirements both for graduation and postsecondary plans. This booklet is designed to assist students and parents in meeting those requirements. Schools may supplement this booklet with information unique to an individual school. As always, please consult your counselor and teachers for additional information concerning course content and selection.

### Course Load

All Brevard County secondary students must attend the regularly scheduled instructional day.

Note: Portions of this handbook may be subject to change due to any future Florida legislative and/or Brevard School Board action.

---

## PROMOTION REQUIREMENTS

### 9<sup>th</sup> Grade to 10<sup>th</sup> Grade

1. Been enrolled one year in the 9-12 sequence;
2. Earned at least six credits (block schools – seven credits). Students must pass one course each in language arts and mathematics, as well as the remedial reading course for students scoring Level 1 or 2 on the FCAT 2.0 Reading the previous year;
3. Met the district attendance requirements; and
4. Must meet end of course exam requirements by graduation?

### 10<sup>th</sup> Grade to 11<sup>th</sup> Grade

1. Been enrolled two years in the 9-12 sequence;
2. Earned at least twelve credits (block schools – fourteen credits). Students must pass two courses each in language arts and mathematics, as well as the remedial reading course for students scoring Level 1 or 2 on the FCAT 2.0 Reading the previous year;
3. Met the district attendance requirements; and
4. Must meet end of course exam requirements by graduation?

### 11<sup>th</sup> Grade to 12<sup>th</sup> Grade

1. Enrolled three years in the 9-12 sequence;
2. Earned at least eighteen credits (block schools – twenty-one credits) including remedial reading for students who failed the FCAT 2.0 Reading the previous year;
3. Met the district attendance requirements;
4. Must meet all end of course exam requirements by graduation.

Exceptions to the number of years spent in the 9-12 sequence for reclassification may be granted to students who are in a planned acceleration program. Students who meet the criteria for reclassification shall be reclassified each semester.

---

## GRADUATION REQUIREMENTS

To be awarded a regular high school diploma, a student must have:

1. Completed all high school credit requirements as defined below or completed the requirements for an International Baccalaureate diploma or Advanced International Certificate of Education diploma.
2. Been enrolled four years in the 9-12 sequence for the 26-credit option or three years for the 18-credit option.
3. Met the district attendance requirements.

4. Passed both the reading and math sections of the 10<sup>th</sup> grade FCAT 2.0 and/or appropriate End of Course (EOC) exam.
5. Demonstrated satisfactory mastery of the Performance Standards in reading, writing, mathematics, science, and social studies as documented in accordance with procedures described in administrative guidelines.
6. Earned a minimum cumulative unweighted grade point average for specific high school diploma option. This GPA is computed on all courses taken, except courses forgiven under state and district policies.
7. Received the principal's approval for graduation.

**NOTES:**

1. Exceptional education students working towards a standard diploma will follow the same graduation requirements as students without disabilities. In specific circumstances an FCAT waiver may be available as outlined in Florida statute.
2. Students who meet the promotion requirements shall be reclassified each semester.
3. Credits for grade level classification may be waived for students who are enrolled in an approved Performance Based Diploma Plan through the Alternative Education Program. At a minimum, a student considered for such a waiver must have taken the Florida Comprehensive Assessment Test either as a 9th or 10th grade student.
4. High school students in grades 9-10 who scored a Level 1 or 2 on the most recent FCAT 2.0 Reading must be placed in Intensive Reading unless they scored a Level 3 or higher for the previous three years. These students will be granted a 1-year exemption from the reading remediation requirement; however, the student must have an academic improvement plan already in place, signed by the appropriate school staff and the parent, for the school year in which the exemption is granted. (s.1003.428(2)(b)1 F.S.)

All remaining students who scored a Level 1 or 2 on the most recent FCAT 2.0 Reading will be placed into one of two types of Intensive Reading classes:

- Extended Academic Learning Time – Those students identified as needing intervention in the areas of vocabulary and comprehension, as well as extra support with decoding and text reading efficiency should be provided with extended academic learning time. These students must be scheduled into a double block of reading every day, all year long.
  - One Period of Reading - All other students who have been identified as needing reading intervention require one period of reading daily every day, all year long.
5. Students who in grade 10 scored Level 2, 3, or 4 on the 10<sup>th</sup> grade Math FCAT 2.0 test and who in grade 11 did not achieve the cut score for college readiness on the Postsecondary Readiness Test (PERT) or equivalent test (ACT) as determined by the Florida Department of Education, must complete one of the following courses as determined by the appropriate designated score: Math for College Readiness (1.0 math credit) or Math for College Success (0.5 elective credit).
  6. Students who in grade 10 scored Level 2 or 3 on the 10<sup>th</sup> grade Reading FCAT 2.0 test and who in grade 11 did not achieve the cut score for college readiness on the Postsecondary Readiness Test (PERT) or equivalent test (ACT) as determined by the Florida Department of Education, must complete one or more of the following courses as determined by the appropriate designated score: English 4: Florida College Prep (1.0 English credit) or Reading for College Success (0.5 elective credit) or Writing for College Success (0.5 elective credit).

**The Four-Year 26-Credit Standard Graduation Option**

The following specific course and credit requirements are required for graduation in the Four-Year Standard 26 Credit Program:

| <b><u>SUBJECT AREA</u></b>                 | <b><u>CREDITS</u></b> |     |
|--------------------------------------------|-----------------------|-----|
| Language Arts (English)                    | 4.0                   | (A) |
| Mathematics                                | 4.0                   | (B) |
| Science*                                   | 4.0                   | (C) |
| Social Studies*                            | 4.0                   | (D) |
| Performing or Fine Arts                    | 1.0                   | (E) |
| HOPE (physical education including health) | 1.0                   | (F) |

|                                     |            |             |
|-------------------------------------|------------|-------------|
| Career Research and Decision Making | 0.5        | (G)         |
| Electives                           | <u>7.5</u> | (H)         |
| Total Credits                       | 26         | (I) (J) (K) |
| Block Schedule Total Credits        | 30         | (L)         |

\*The requirement for the Class of 2013 is a 4<sup>th</sup> credit in science OR social studies. Pending Board approval, the requirement may be a 4th credit in science OR social studies beginning with the 2012-13 school year for all grade levels 9-12.

**NOTE 1:**

Any student in Grades 9-12 who scored Level 1, Level 2, or failed FCAT 2.0 Reading the previous year must take Intensive Reading which will be recorded as an elective.

**NOTE 2:**

**Rigorous Course Requirements:** Students will be required to complete an individualized program of study which includes a minimum of three (3) credits in at least one of the following areas prior to graduation:

- Approved Dual Enrollment, Advanced Placement (AP), International Baccalaureate (IB), Advanced International Certificate of Education (AICE), approved Honors courses (3 credits in any combination)

**or**

- Career & Technical Education Program of Study (3 or more credits to complete a sequential career and technical education program resulting in a credential endorsed by a national, state, or local industry). Successful completion of three (3) or more sequential credits in JROTC Programs meet the Career & Technical Education Program of Study requirement.

**NOTE 3:**

- A. Language Arts must include a major concentration in composition and literature. The four credits in language arts may be chosen from the following: English 1, English 2, English 3, English 4, AP Language, AP Literature, AICE English courses, IB English courses, Dual Enrollment English courses. (s.1003.429(1)(b)1,F.S.)
- B. Mathematics must be taken during the ninth and tenth grade years. Note: Three of the credits must be earned in grades 9-12. Two of the four credits in mathematics must include Algebra I (or a series of courses equivalent to Algebra I), geometry (or equivalent course), or a higher-level mathematics course. School districts are encouraged to set specific goals to increase enrollments in, and successful completion of, Geometry, and Algebra II. Beginning with the following school years, additional mathematics graduation requirements for students entering grade nine include the following:
- 2010-2011** -Algebra I EOC Assessment performance which will constitute 30 percent of the student's final course grade, if enrolled (s.1008.22(3)(c)2.a.(1),F.S.);
  - 2011-2012** –Earn passing score on the Algebra I EOC Assessment in order to earn course credit and the Geometry EOC Assessment performance which will constitute 30 percent of the student's final course grade, if enrolled. s.1008.22(3)(c)2.a.(1),F.S.); and
  - 2012-2013** –Earn a passing score on the Geometry EOC Assessment in order to earn course credit and one of the four credits in mathematics which must be Algebra 2 or a series of courses equivalent to Algebra 2 as approved by the State Board of Education. Note: Courses identified as equivalent courses for Algebra I, Geometry, and Algebra 2 are listed in the "Equivalent Course" Recommendations. (s.1003.428(2)(a)2,F.S.)
- C. Two of the four credits in science must have a laboratory component. Three of the four credits in science must include either (a) one credit each in biology, chemistry, and physics, (b) the three-credit sequence of Integrated Science I, II, and III, or (c) equivalent approved by the Director of Secondary Programs. Beginning with the graduation Class of 2012, based on individual student needs, the 4th additional science credit may be chosen from the science core (biology, chemistry, physics OR Integrated Science I, II, III,) **OR** from any additional science course offered. Beginning with the following school years, additional science graduation requirements for students entering grade nine include the following:
- 2011-2012** –Biology I EOC Assessment performance will constitute 30% of the student's final course grade, if enrolled (s.1008.22(3)(c)2(a)(1),F.S.); and
  - 2012-2013** –Earn a passing score on the Biology I EOC Assessment in order to earn course credit. (s.1003.428(2)(a)3,F.S.)

- D Three of the four credits in social studies must include one credit each in United States History and World History and one-half credit each in United States Government and Economics. (s.1003.428(2)(a)4,F.S.)
- E One credit is required in performing or fine arts, which may include speech and debate or a practical arts course that incorporates artistic content and techniques of creativity, interpretation, and imagination. Eligible practical arts courses shall be identified through the FLDOE Course Code Directory.
- F One credit in physical education must include the integration of health (Health Opportunities through Physical Education – H.O.P.E.).
1. Participation in an interscholastic sport at the junior varsity or varsity level for two full seasons shall satisfy the one-credit requirement in physical education if the student passes a competency test on personal fitness test with a score of “C” or better. The competency test on personal fitness must be developed by the Department of Education. A district school board may not require that the one credit in physical education be taken during the 9<sup>th</sup> grade year.
  2. Completion of two years in a Reserved Officer Training Corps (R.O.T.C) class, a significant component of which is drills, shall satisfy the one credit requirement in physical education and the one credit requirement in performing arts.
- G. One-half credit is required in Career Research and Decision Making. (s.1003.428(2)(a)1-6, F.S.)
- H. Electives – Seven and a half credits. Any student who earns 4 credits in science OR social studies, would be required to earn a minimum of 8.5 electives.
- For each year in which a student scores at Level 1 or Level 2 on FCAT 2.0 Reading, the student must be enrolled and complete an intensive reading course the following year. Placement of Level 2 readers in either an intensive reading course or a content area course in which reading strategies are delivered shall be determined by diagnosis of reading needs. The department shall provide guidance on appropriate strategies for diagnosing and meeting the varying instructional needs of students reading below grade level. Reading courses shall be designed and offered pursuant to the comprehensive reading plan required by s.1011.62 (8), F.S.
  - For each year in which a student scores at Level 1 or Level 2 on FCAT 2.0 Mathematics, the student must receive remediation the following year. These courses may be taught through applied, integrated, or combined courses and are subject to approval by the department for inclusion in the course Code Directory. (s.1003.428(2)(b)(1-2), F.S.)
- I. Beginning with students entering Grade 9 in the 2011-2012 school year, at least one course within the 26 credits required for graduation must be completed through online learning. A high school online course taken during grades 6 through 8 fulfills this requirement. This requirement shall be met through an online course offered by the Florida Virtual School, an online course offered by the high school, or an online dual enrollment course offered pursuant to a district inter institutional articulation agreement pursuant to s.1007.235, F.S. A student who is enrolled in a full-time or part-time virtual instruction program under s.1002.45 meets this requirement.
- J. ESOL/Home Language - Upon successful completion, students in grades 9-12 who are enrolled in ESOL/Home Language are awarded credit towards graduation requirements.
- K. Student completion of an International Baccalaureate or Advanced International Certificate of Education curriculum shall be deemed to meet the curricular requirements of this subsection.
- L. Students who transfer from a block schedule school with a concentrated semester curriculum must complete an extra (1/2) credit for each completed semester taken in the block schedule school. Any student who completes at least one semester in a Concentrated Semester Curriculum must complete four less than the maximum credits available in the 9-12 sequence to graduate. The GPA for graduation will be calculated on this number of credits.

**The Three-Year 18-Credit Standard College Preparatory Graduation Option**  
**Effective for students entering grade 9 beginning 2010-11**

The following specific course and credit requirements are required for graduation in the Three-Year 18-Credit Standard College Preparatory Graduation Option. See your counselor for more information.

- 4 credits in English (major concentration in composition and literature)
- 4 credits in mathematics (Algebra 1 level or higher from the list of courses that qualify for state university admission)
- 3 credits in natural sciences (2 credits must include a lab component)
- 3 credits in social sciences (credits must include United States History, World History, and one-half credit

- in Economics and one-half credit in United States Government)
- 2 credits in the same second language unless the student is a native speaker of or can otherwise demonstrate competency in a language other than English. If the student demonstrates competency in another language, the student may replace the language requirement with two credits in other academic courses.
- 2 credits in electives

Additional Requirements:

1. At least 6 of the 18 credits required for this program must be received in classes that are; dual enrollment; Advanced Placement; International Baccalaureate; Advanced International Certificate of Education courses; specifically listed or identified by the Department of Education as rigorous pursuant to section 1009.531(3), F.S;
2. A cumulative weighted grade point average of 3.5 on a 4.0 scale in the courses required for the college preparatory option
3. A weighted or unweighted grade that earns at least 3.0 points, or its equivalent, to earn course credit toward the 18 credits required for the college preparatory option
4. All 18 credits required for the Three-Year College Preparatory Program, including two electives, must satisfy the course distribution requirements for state university admissions.

**The Three-Year 18-Credit Career Preparatory Graduation Option**  
**Effective for students entering grade 9 beginning 2010-11**

The following specific course and credit requirements are required for graduation in the Three-Year 18-Credit Standard Career Preparatory Graduation Option. See your counselor for more information.

- 4 credits in English (major concentration in composition and literature)
- 4 credits in mathematics (One of the three credits in mathematics must be Algebra 1 or a series of courses equivalent to Algebra 1; however, there must be two credits other than Algebra 1 or its equivalent)
- 3 credits in natural science (2 credits must include a lab component)
- 3 credits in social sciences
- 3 credits in a single vocational or career education program and 1 elective credit, or 3 credits in career and technical certificate dual enrollment and 1 elective credit, or 4 credits in vocational or career technical courses

Additional Requirements:

1. A cumulative weighted grade point average of 3.0 on a 4.0 scale, or its equivalent, in the courses required for the career preparatory option.
2. A weighted or unweighted grade that earns at least 2.0 points, or its equivalent, to earn course credit toward the 18 credits required for the career preparatory option.

**NOTE for both 18-Credit Options:**

- A. The four credits in language arts may be chosen from the following: English 1, English 2, English 3, English 4, AP Language, AP Literature, AICE English courses, IB English courses, Dual Enrollment English courses. (s.1003.429(1)(b)1,F.S.).
- B. Mathematics must be taken during the ninth and tenth grade years.- One of the three credits in mathematics must be Algebra I or a series of courses equivalent to Algebra I; however, there must be two credits other than Algebra I or its equivalent. Beginning with the students entering Grade 9 in the 2010-2011 school year, four credits in mathematics at Algebra I level or higher from the list of courses that qualify for state university system are required. Beginning with the following school years, additional mathematics graduation requirements for students entering grade nine include the following:
  - 2010-2011 - Algebra I EOC Assessment performance which will constitute 30 percent of the student's final course grade, if enrolled (s.1008.22(3)(c)2.a.(1));
  - 2011-2012 – Earn passing score on the Algebra I EOC Assessment in order to earn course credit and the Geometry EOC assessment performance which will constitute 30 percent of the student's final course grade, if enrolled (s.1008.22(3)(c)2.a.(1); and
  - 2012-2013 – Earn a passing score on the Geometry EOC assessment in order to earn course credit and one of the four credits in mathematics which must be Algebra 2 or a series of courses equivalent

to Algebra 2 as approved by the State Board of Education. Note: Courses identified as equivalent courses for Algebra I, Geometry, and Algebra 2 are listed in the “Equivalent Course” Recommendations.

- C. Two of the three credits in science must have a laboratory component. Students shall meet the three-credit graduation requirement in science by either (a) one credit each in biology, chemistry, and physics, (b) the three-credit sequence of Integrated Science 1, 2, and 3, or (c) equivalent approved by the Director of Secondary Programs. Beginning with the following school years, additional science graduation requirements for students entering grade nine include the following:
- 2011-2012 – Biology I EOC assessment performance will constitute 30% of the student's final course grade, if enrolled (s.1008.22(3)(c)2.a.(1); and
  - 2012-2013 – Earn a passing score on the Biology EOC Assessment in order to earn course credit.
- D. One credit each in United States History and World History and one-half credit each in United States Government and Economics.

## EXCEPTIONAL STUDENT EDUCATION DIPLOMA OPTIONS

### Exceptional Student Education Diploma – Independent Level – Option 1

Independent level students, who are working toward a Special Diploma and taking the Florida Alternate Assessment, are considered to be capable of meeting their own needs as well as working and living successfully in their communities as adults without overt support from others. To meet graduation requirements, students must have earned 26 credits, or 30 block schedule credits. Beginning the 2010-11 school year for entering 9<sup>th</sup> grade special diploma students taking 7000 level courses or higher, the following credits are required:

| <b><u>Subject Area</u></b>   | <b><u>Credits</u></b> |
|------------------------------|-----------------------|
| Language Arts and/or Reading | 4                     |
| Mathematics                  | 4                     |
| Science                      | 4                     |
| Social Studies               | 4                     |
| Performing or Fine Arts      | 1                     |
| Physical Education           | 1 (a)                 |
| Career Education             | 4 (b)                 |
| Electives**                  | 4                     |
| <b>Total Credits</b>         | <b>26</b>             |

(a) Regular Physical Education, Adaptive Physical Education, or Specially Designed Physical Education fulfills the credit requirement for Physical Education and shall be indicated on the student’s IEP. The use of Physical Education and Health Sunshine State Standards (SSS) or SSS Access Points is required.

(b) Career Education may include Career Research and Decision Making, CTE classes and/or 7000 Career classes. Life Management and Transition and Self Determination are not required for the Class of 2012 and beyond however, students are strongly encouraged to enroll in courses satisfying the IDEA requirement for the transition of students from school to post-school activities. Transition and self determination skills must be included within other course content and identified on the IEP.

\*\*Students are strongly encouraged to enroll in vocational courses satisfying the IDEA requirement for the transition of students from school to post-school activities

### Special Diploma – Independent Level – Option 2

Students who are working toward a Special Diploma and taking FCAT 2.0 or those students who are appropriately educated at the Independent Level taking the FAA, are considered to be capable of meeting their own needs, working and living successfully in their communities as adults without overt support from others. To meet graduation requirements, students must have 12 specific credits. For special diploma students taking 7000 level courses or higher, the following credits are required:

| <b>Subject Area</b>            | <b>Credits</b> |
|--------------------------------|----------------|
| Language Arts/Reading          | 2              |
| Mathematics                    | 2              |
| Science                        | 2              |
| Social Studies                 | 2              |
| Physical Education             | 1              |
| Life Management and Transition | .5             |
| Self Determination             | .5             |
| Career Placement               | 1              |
| Electives                      | 1              |
| <b>Total</b>                   | <b>12</b>      |

Additionally, the following requirements are in place:

- IEP goals and objectives written specifically for Option 2;
- Complete graduation plan;
- 22 community and employment competencies;
- 18 weeks of continuous employment at an average of up to 20 hours per week as indicated in student's IEP.

ESE students may begin Option 2 community based employment on or after their 16th birthday. Option 2 is an individually designed, flexible option based on mastery of employment and community competencies. Under this option, students will be successfully employed in paid jobs in the community as a requirement for graduation. Option 2 is a competency-based diploma in which skills are learned and mastered on the job. The guidelines and requirements are defined in the manual for Special Diploma Option 2.

### **Special Certificate of Completion**

Exceptional education students, except students eligible for the Gifted Student Program, working towards a Standard Diploma, may participate in all commencement exercises without having passed the Florida Comprehensive Assessment Test (FCAT 2.0) or receiving an FCAT waiver. These students must have all required credits and will receive a Certificate of Completion.

Certificate of Completion will be available to ESE students who are working towards a Standard Diploma but cannot successfully pass the FCAT 2.0 or meet the alternative waiver requirement. To be awarded a Certificate of Completion a student must earn the minimum number of credits and pass the specific standard diploma courses designated by the School Board. Exceptional Education Students will be allowed to participate in all commencement exercises when they have completed the required 26/30 credits even if they have not successfully passed the FCAT 2.0 or met the alternative requirements.

---

## **ACCELERATED PROGRAMS**

State regulations provide opportunities for schools and colleges to offer students programs for acceleration. Detailed information concerning these programs may be obtained from the school counselors. Students and parents need to review college and university graduation requirements for their intended course of study.

### **COLLEGE LEVEL WORK**

Students who have demonstrated readiness to pursue college level work while still in high school are afforded the opportunity to do so by participating in the following programs:

#### **1. Advanced Placement**

Advanced Placement (AP) is the enrollment of an eligible secondary student in courses offered by the AP Program administered by the College Board. Course descriptions and course examinations are prepared by the College Board. Examinations are administered at high school sites in May of each year at a fee established by the College Board. Students who successfully complete the course work in an Advanced Placement class receive credit toward high school graduation. Postsecondary credit for an AP course shall be awarded at Florida public colleges/universities to students who score a minimum of 3 on a 5-point scale on the corresponding AP exam. Although most colleges and universities grant advanced placement and/or credit to students presenting AP Examination grades of 3 or higher, policies

on awarding college credit are the decision of the individual institution. All students enrolled in an AP course are required to take the AP exam. Students shall be exempt from the payment of any fees for administration of the exam regardless of whether or not the student achieves a passing score on the exam. (s.1007.27(6), F.S.)

### **Brevard Public Schools Advanced Placement Diploma**

To earn the Brevard Public Schools Advanced Placement Diploma, students must participate in at least six full-year Advanced Placement (AP) courses (or a combination of full-year courses and semester courses totaling six credits) earning scores of 3 or higher on the exams for those courses. Students who complete this specified cluster of AP courses may accelerate the first year of college through early completion of lower division general education requirements.

## **2. Dual Enrollment (Academic, Vocational)**

The dual enrollment program is defined as the enrollment of an eligible secondary student in a postsecondary course creditable toward high school completion and a career and technical certificate or an associate of arts or baccalaureate degree. Qualified students may take college level courses while still in high school by co-enrolling in a community college, college or university, subject to entrance requirements of the individual institution and the terms of the articulation agreement between the School Board and the postsecondary institution. For additional information about requirements to enroll in dual enrollment courses at a specific institution, please contact your guidance counselor.

High School credits are awarded for approved dual enrollment courses successfully completed by a student provided that the following conditions are met:

- a. The course is academic in nature and may be applied toward an academic degree (physical education and college preparatory courses are specifically excluded); or the course is a vocational course or program approved by school district and the postsecondary institution.
- b. The student has demonstrated readiness to engage in postsecondary academic work.
- c. The student has been recommended by a counselor to participate.
- d. The principal has given prior approval for the student to participate and has approved the specific courses in which the student is enrolled, in accordance with the approved list of courses jointly agreed upon by the school district and college.

The State Board of Education has determined the number of postsecondary credit hours earned through dual enrollment that will satisfy the requirements for high school graduation. A list of the dual enrollment courses and their high school credit and subject equivalencies is available at [www.facts.org](http://www.facts.org). College preparatory instruction and physical education courses that focus on the physical execution of a skill rather than the intellectual attributes of the activity are ineligible for inclusion in the dual enrollment program. The awarding of college credit is a decision of the college, not of the district or high school principal.

Students may take courses during school hours, after school hours and during the summer term. Dual enrollment students are exempt from the payment of registration, tuition and lab fees. Required textbooks will be issued free of charge to public school dual enrollment students for use during the term. All textbooks issued to the students must be returned to the school before textbooks can be issued for the next term. Purchase of workbooks, lab manuals, and other recommended materials are the responsibility of the students. Students in dual enrollment may not drop or withdraw from a course without first obtaining permission from the principal.

Note specific requirements below per articulation agreement with Brevard Community College:

- a. 3.0 cumulative unweighted GPA for A.A. degree academic dual enrollment courses
- b. 2.5 cumulative unweighted GPA for A.S./A.A.S. degree technical dual enrollment courses
- c. 2.0 cumulative unweighted GPA for vocational certificate dual enrollment courses

Students must maintain an overall GPA of 2.0 in dual enrollment coursework and continue to meet initial eligibility requirements to maintain their dual enrollment status.

### 3. **Early Admission**

The early admission program is in lieu of the senior year of high school and is available only in the fall semester for students on the 26 credit track. Early admissions shall be in the form of dual enrollment through which eligible secondary students enrolling in an eligible postsecondary institution in courses that are creditable towards the high school diploma and the associate or baccalaureate degree. Early admissions students enrolled in a state university in Florida with whom Brevard Public Schools has an articulation agreement are exempt from the payment of registration, tuition, textbook costs and lab fees.

Early admission is available to students who have completed the following:

- a. Their junior year;
- b. All required courses for high school graduation with the exception of (1) one high school credit in English, (2) one high school credit in science, (3) one high school credit in social studies, (4) one high school credit in math, and (5) 0.5 high school credit in Performing Arts. These must be completed at the college;
- c. Met the grade point average and other admission requirements of the community college, college or university they plan to attend;
- d. Been recommended by a high school counselor and received prior approval of the high school principal.

Students participating in the early admissions program must successfully complete two semesters of college with a minimum of 24 hours of college credits earned with an overall unweighted grade point average of 2.0 or higher and meet the high school graduation requirements.

Students in early admission or full-time dual enrollment may not drop or withdraw from a course without first obtaining permission from the principal. Early admission and full-time dual enrollment students are expected to enroll in and successfully complete (2.0 unweighted grade point average) a minimum of 12 hours each semester.

### 4. **International Baccalaureate (IB)**

The International Baccalaureate (IB) Program is the curriculum whereby students are enrolled in a program of study offered through the IB Program administered by the IB Office. The State Board of Education has established rules that specify the cutoff scores and IB Examination that will be used to grant postsecondary credit at community colleges and universities. Students shall be exempt from payment of any fees for administration of the examinations regardless of whether or not the student achieves a passing score on the examination. (s.1007.27(8), F.S.)

### 5. **Advanced International Certificate of Education Program (AICE)**

The Advanced International Certificate of Education (AICE) Program is the enrollment of eligible secondary students in a program of study offered through the Advanced International Certificate of Education Program administered by the University of Cambridge Local Examinations Syndicate. The specific course for which the student receives credit is determined by the community college or university that accepts the student for admission. Students shall be exempt from the payment of any fees for administration of the examinations regardless of whether or not the student achieves a passing score on the examination. (s.1007.27(9), F.S.)

Note: Any student who earns 9 or more credits from one or more of the acceleration mechanisms provided for in this section is exempt from any requirement of a public postsecondary educational institution mandating enrollment during a summer term.

### 6. **Advance Standing Credit Program**

Students may earn community college credit by completing high school career and technical courses in selected job preparatory programs that have an articulated advance standing credit program agreement. Community college credit will be awarded after the student has graduated from high school and is enrolled in and successfully completes one semester at Brevard Community College in the program for which the advance standing credit is to be awarded.

## DISTANCE LEARNING

Full-time students may enroll in courses offered by distance (on-line or correspondence) learning programs. Courses may be taken through distance learning provided that (1) the principal approves the course(s) prior to enrollment, (2) the course content is comparable to the district-adopted course(s), and (3) if applicable, the course or courses are received on an official transcript as defined by the State Uniform Transfer of High School Credits Rule, FS 1003.25(3). The principal shall award credit for successful course completion. Exceptions due to extenuating circumstances must be approved by the Superintendent or his designee.

Florida Virtual School (FLVS) offers fully accredited, online courses aligned with Florida's Sunshine State Standards. The district school board will allow students to enroll in appropriate courses and award credit for successful completion of such courses. FLVS courses may be taken during or after the normal school day and during the summer. Students who wish to enroll in FLVS as part of the regular school day must submit a written request to the school principal.

---

## DISTRICT VIRTUAL INSTRUCTION PROGRAM

Beginning with the 2009-2010 school year, each school district shall provide eligible students within its boundaries the option of participating in a virtual instruction program. The program shall be full-time for students enrolled in kindergarten through grade 12. Section 1002.45(5), F.S and part-time enrollment for grades 6-12. Enrollment in the full or part-time program for grades 6-12 is limited to students who reside in Brevard County and meet eligibility requirements for enrollment in a traditional Brevard Public school.

---

## GRADING SCALE

The following grading scale has been established by Florida Statute 1003.437 and is used in all Brevard County secondary schools.

|          |   |   |
|----------|---|---|
| 90 - 100 | = | A |
| 80 - 89  | = | B |
| 70 - 79  | = | C |
| 60 - 69  | = | D |
| 0 - 59   | = | F |

To average semester grades, the teacher doubles the average of each grading period, adds the semester exam grade and divides by five. The teacher may use either numerical averages or letter grades with the following values assigned: A = 4 points; B = 3 points; C = 2 points; D = 1 point; F = 0 points. Final grades are assigned according to the following scale:

|      |   |      |   |   |
|------|---|------|---|---|
| 3.50 | - | 4.0  | = | A |
| 2.50 | - | 3.49 | = | B |
| 1.50 | - | 2.49 | = | C |
| 0.50 | - | 1.49 | = | D |
| 0.00 | - | 0.49 | = | F |

---

## GRADE POINT AVERAGE (GPA)

### UNWEIGHTED GPA

The cumulative unweighted grade point average includes all courses taken for credit. It is calculated for high school graduation purposes with the exception of those courses retaken under the Grade Forgiveness Policy.

| Grade | All Courses |
|-------|-------------|
| A     | 4           |
| B     | 3           |
| C     | 2           |
| D     | 1           |
| F     | 0           |

## WEIGHTED GPA

The cumulative weighted grade point average includes additional weight for Dual Enrollment, Advanced Placement (AP), International Baccalaureate (IB), and Advanced International Certificate of Education (AICE) courses, as well as Level III (Advanced) high school courses. Note: School districts must weight dual enrollment courses the same as advanced placement courses when grade point averages are calculated. Alternative grade calculation or weighting systems that discriminate against dual enrollment courses are prohibited.

| Grade | Dual Enrollment/<br>AP / IB/ AICE | Level III Courses | Other Courses |
|-------|-----------------------------------|-------------------|---------------|
| A     | 5                                 | 4.5               | 4             |
| B     | 4                                 | 3.5               | 3             |
| C     | 3                                 | 2.5               | 2             |
| D     | 1                                 | 1                 | 1             |
| F     | 0                                 | 0                 | 0             |

---

## HONOR GRADUATES / VALEDICTORIAN / SALUTATORIAN

Any student with a minimum of a 3.50 cumulative weighted GPA at the end of the first semester during the year prior to graduation shall be declared an honor graduate provided that the student maintains a comparable level of performance during the second semester. All high school course grades earned in grades 7-12 are to be included in the grade point average for the determining honor graduates with the following exceptions:

- A. Adult education
- B. Pass/fail grades (transfer students)
- C. On-the-job
- D. Lowest grade for a course that is repeated

The cumulative weighted grade point average as indicated in the chart above shall be utilized in computing the grade point average.

The local school determines policies and procedures associated with the selection of student graduation speakers and/or designation of valedictorian or salutatorian.

---

## HIGH SCHOOL GRADING SYSTEM – RANK-IN-CLASS

Rank-in-class shall be for the purpose of college admissions and scholarship applications. The release of such individual student information shall be in accordance with School Board Policy 8330. Rank-in-class shall be computed on a cumulative unweighted GPA. State universities in Florida recalculate a student's grade point average for admissions purposes in accordance with Florida statute and rule.

A student selecting one of the three-year graduation options must be included in the overall class ranking for his/her graduation year based on the relative ranking of his/her cumulative GPA. These students are also eligible for consideration as valedictorian, salutatorian, and the Talented 20 Program. If the student meets all the requirements, he/she is also eligible for a National Merit Scholarship, a Bright Futures Scholarship, and participation in college athletics.

---

## FACTS.ORG

FACTS.org (Florida Academic Counseling and Tracking for Students) is Florida's official online student advising system. Middle school students, high school students, college students, parents and counselors can use the services provided on the website to help plan and track educational progress in Florida. FACTS.org is provided free by the Florida Department of Education to help students make informed choices about their education.

With FACTS.org, students are able to:

- Determine career objectives
- Evaluate high school progress
- See high school course summary and grades
- Learn about the higher education opportunities in Florida
- Apply to college online
- Choose the right major for college
- Identify scholarship opportunities

---

## OFFICE OF STUDENT SERVICES

School counselors and other professional staff from the Office of Student Services play a significant role in creating a positive climate. They provide assistance to students in developing their academic skills, broadening their educational experiences, and overcoming challenges that could interfere with their academic development. Some of the areas of responsibility of the Office of Student Services are as follows:

- Attendance
- Child abuse and neglect prevention services
- Dropout prevention
- English for Speakers of Other Languages (ESOL)
- Foreign exchange programs
- Guidance and counseling
- Health services
- Home education
- Homeless/children in transition
- Missing children
- Nonimmigrant students
- Safe schools program
- School counseling
- Student records
- Student-parent program
- Vision and hearing screening

---

## BRIGHT FUTURES SCHOLARSHIPS

The Bright Futures Scholarship Program is the umbrella program for three state-funded scholarships: the Florida Academic Scholars, the Florida Medallion Scholars, and the Florida Gold Seal Vocational Scholars Awards. These awards are based on specific academic requirements and community service hours earned in grades 9-12. The new community service requirements are as follows:

- Florida Academic Scholars Award – 100 hours (s. 1009.534(1)(e) F.S.)
- Florida Medallion Scholars Award – 75 hours (s. 1009.535(1)(e) F.S.)
- Florida Gold Seal Vocational Scholars Award – 30 hours (s. 1009.536(1)(e) F.S.)

Students should see their counselors or visit the Bright Futures website at:

<http://www.floridastudentfinancialaid.org/SSFAD/home/uamain.htm>. Students completing the three-year graduation options are eligible for a Bright Futures Scholarship if they meet all the requirements.

---

## TESTING

Each school provides testing services to all of its students. Upon request, the counselor can administer interest inventories, intelligence and/or aptitude tests. If there is a problem that requires a special evaluation or test, the services of the school psychologist may be provided with the written permission of the parent.

### NEXT GENERATION SUNSHINE STATE STANDARDS (NGSSS)

The FCAT 2.0 test and End-of-Course assessments are criterion-referenced tests. These tests assess student achievement on the knowledge and skills described in the state curriculum framework called the Next Generation Sunshine State Standards.

- Ninth and tenth grade students take the FCAT 2.0 Reading test.
- Tenth grade students take the FCAT Writing test.

For students who began 9<sup>th</sup> grade in 2010-11 and after, a passing score on the Reading FCAT 2.0 is a requirement for graduation from a Florida public high school. Students who do not receive a passing score on the 10<sup>th</sup> grade Reading FCAT 2.0 have additional opportunities to take the FCAT 2.0 Reading Retake Test before graduation. Students may also enroll for a 13<sup>th</sup> year of public education should they need additional instruction to successfully pass the FCAT 2.0 Retake Test. Students may also submit a passing concordant score on ACT or SAT to meet the graduation requirement if they do not pass the 10<sup>th</sup> grade Reading FCAT 2.0.

An Algebra 1 End-of-Course (EOC) assessment is required beginning with freshmen who enter high school during the 2010-2011 school year. A passing score on this assessment will be required for graduation beginning with freshman who enter high school during the 2011-2012 school year.

A Geometry End-of-Course (EOC) assessment will be required for all students enrolled in Geometry or an equivalent course in 2011-12 and, for freshmen, will be included as part of a student's final course grade. A passing score on this assessment will be required for graduation beginning with freshman who enter high school during the 2012-13 school year.

A Biology End-of-Course (EOC) assessment will be required for all students enrolled in Biology in 2011-12 and, for freshmen, will be included as part of a student's final course grade. Freshman who enter high school during the 2012-13 school year will be required to take the Biology End-of-Course assessment upon completion of their first Biology course or completion of the three-course Integrated Science sequence. A passing score on this assessment will be required for graduation beginning with freshman who enter high school during the 2012-13 school year.

A History End-of-Course (EOC) assessment will be required for all students enrolled in History or an equivalent course in 2012-13. A score on this assessment that will count as 30% of the final course grade will be required for graduation beginning with freshman who enter high school during the 2012-13 school year.

**CONCORDANT SCORES**

A student may also meet the FCAT 2.0 graduation requirement by attaining a score on the ACT or SAT that is comparable to the FCAT passing score. (Students new to the public school system in Grade 12 must pass the Reading portion of the FCAT 2.0, and may use alternative ACT or SAT scores, but do not need to have taken FCAT 2.0 three times to use the alternate scores.)

|     | Reading | Math |
|-----|---------|------|
| SAT | 420     | 340  |
| ACT | 18      | 15   |

Effective beginning 2010-2011

**FLORIDA ALTERNATE ASSESSMENT (FAA)**

The FAA is provided for a small number of students with significant cognitive disabilities for whom the IEP team has determined and documented the need for an alternate assessment.

**COMPREHENSIVE ENGLISH LANGUAGE LEARNING ASSESSMENT (CELLA)**

CELLA is administered to all ELL students (English Language Learners) to assess language acquisition.

**PRELIMINARY SCHOLASTIC ASSESSMENT TEST / NATIONAL MERIT SCHOLARSHIP QUALIFYING TEST (PSAT/NMSQT)**

This test is administered by the College Board and functions as practice for SAT I, as competition for scholarships, as a signal to colleges to mail recruitment information, and as a clear-cut feedback about skills needed for college success. The test is usually administered in October to eleventh graders but ninth and tenth graders may also take the test. Eleventh grade PSAT scores are used to determine NMSQT

semifinalists. It is recommended that college-bound students consider taking this test earlier in their high school career to maximize their performance on future college placement tests. See your counselor for details and testing date.

### **PLAN**

The PLAN® program helps tenth graders build a solid foundation for future academic and career success and provides information needed to address school districts' high-priority issues. It is a comprehensive guidance resource that helps students measure their current academic development, explore career/training options, and make plans for the remaining years of high school and post-graduation years. PLAN can help all students—those who are college-bound as well as those who are likely to enter the workforce directly after high school.

As a "pre-ACT" test, PLAN is a powerful predictor of success on the ACT. At the same time, many schools recognize the importance of PLAN testing for all students, as it focuses attention on both career preparation and improving academic achievement.

In Brevard, PLAN is administered in the fall of the tenth grade year as a part of Florida's statewide assessment program.

### **COLLEGE ENTRANCE and/or PLACEMENT TESTS**

**SAT I:** A reasoning test that measures developed verbal and mathematical reasoning abilities and process writing abilities related to successful performance in college.

**SAT II:** Subject tests that are designed to measure knowledge and the ability to apply that knowledge in specific subject areas.

**ACT:** A curriculum-based test that measures the skills necessary for college coursework in English, mathematics, reading and science reasoning.

**Advanced Placement/ International Baccalaureate/ Advanced International Certificate of Education Programs:** A series of college level subject area tests taken after the completion of AP/IB/AICE coursework in high school.

**Postsecondary Education Readiness Test (PERT):** A series of content specific exams in reading, math and writing to determine if students are in need of additional remediation prior to beginning college level courses.

#### **College Admission Testing Calendar:**

---

|              |                                                        |
|--------------|--------------------------------------------------------|
| PSAT/NMSQT   | October                                                |
| SAT I and II | October, November, December, January, May and June     |
| SAT I only   | March                                                  |
| ACT          | September, October, December, February, April and June |

Check with your counselor for exact dates, applications, and deadlines.

---

## **POST-HIGH SCHOOL EDUCATION**

Students interested in continuing their education at a four-year college, a two-year college, at a business, trade, or technical school should begin early in their high school career to formulate their plans. In choosing a postsecondary institution, one should consider the following:

- Type of educational program available
- High school subjects required for admission
- Specific admission tests required
- Length of time needed for completion of program
- Cost of schooling
- Financial aid available
- Housing facilities
- Location, size, and the accrediting agency of the school

---

## ADMISSION TO TWO AND FOUR YEAR COLLEGES AND UNIVERSITIES

Admission to college is based upon an evaluation of one's grade point average (GPA), standardized test scores (SAT I or ACT), recommendations, and personal data (which may include a written essay). Colleges usually determine GPA status based on the following core academic courses: English, social studies, foreign language, laboratory science, and mathematics beginning with Algebra I. Depending on individual college requirements, other courses may be included in determining the GPA. Students can best prepare for college and college entrance tests by taking Level 3 or higher classes. Minimum college entrance course recommendations, in grades 9 through 12 are listed:

- 4 years of English (language arts)
- 4 years of math (Algebra 1 and higher)
- 3 years of science
- 3 years of social studies
- 2 years of a foreign language

College bound students who take a program below this recommendation level may find some difficulty achieving satisfactory scores on college admission tests and entrance to selective institutions.

Many colleges and universities require specific academic subjects for entry. Students who are interested in continuing their formal education beyond high school should check college catalogs and discuss their plans with their school counselor.

A highly informative source for Florida college admissions can be found at [www.facts.org](http://www.facts.org).

### What Colleges Require

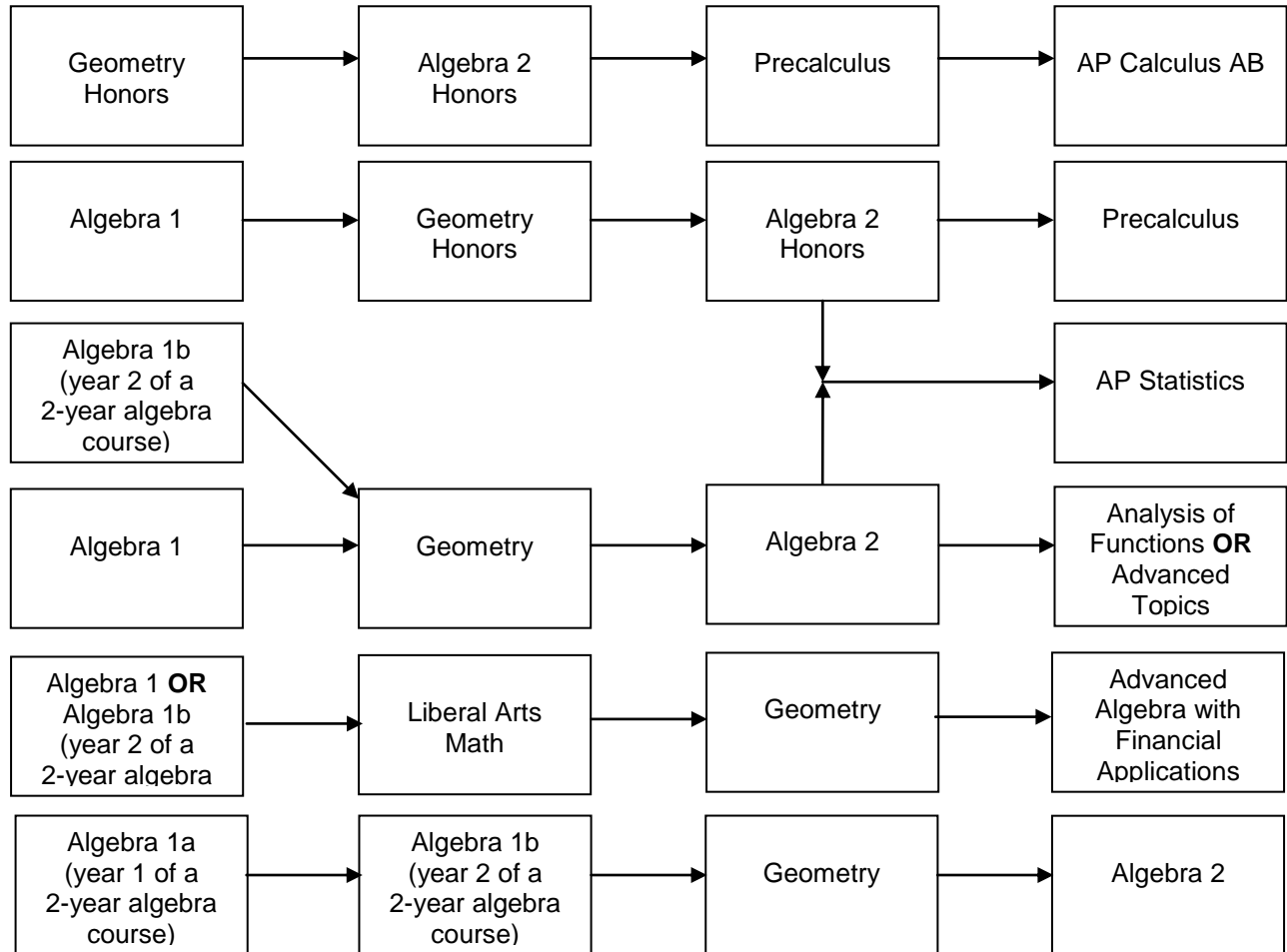
The admission requirements vary from college to college. They may include any or all of the following:

- An application fee, usually nonrefundable. Many colleges will waive this fee under special circumstances. See your counselor for details.
- An official application form providing information about your background, previous education, and college plans.
- An official high school transcript of your courses, final grades and test scores.
- One or more standardized admission tests. The most common tests used are SAT I, SAT II and ACT. Visit [www.collegeboard.com](http://www.collegeboard.com) and [www.act.org](http://www.act.org) for further information on these tests. (Plan to take these tests at least six weeks before the college's application deadline to allow enough time for the score report to reach the college.)
- One or more letters of recommendation from a teacher and/or counselor. Generally, the colleges are interested in what you have accomplished in high school and what kind of school citizen you are; however, some institutions may also accept recommendations from a member of the clergy, alumnus, or adult member of the community. As a courtesy you should give people ample time to complete the recommendations and meet the college deadline.
- A personal essay or autobiographical statement is required by some institutions, particularly four-year private colleges. This is your chance to express your individuality in a way that will set you apart from other applicants.
- An interview with a college admissions officer is in your best interest. This is your chance to express personally your background, your interests and goals and why you are interested in the college. It is also a time for you to ask questions to get the information you need about a college in order to make an informed decision.

## COURSE SEQUENCES FOR MATHEMATICS, LANGUAGE ARTS, SCIENCE AND SOCIAL STUDIES

Please see below the approved course sequences for the Mathematics, Language Arts, Science, and Social Studies graduation requirements.

### SENIOR HIGH SCHOOL MATHEMATICS



NOTE: The flowchart is intended to indicate a normal sequence of courses for the senior high school student. It is not a system for tracking. For example, a student who begins the sequence with Algebra 1 could take Geometry Honors the following year, based on performance and teacher recommendation.

The following 9<sup>th</sup> grade cohorts are subject to the End of Course requirements outlined below:

2010-11 – Take the Algebra 1 EOC which counts 30% of the final course grade

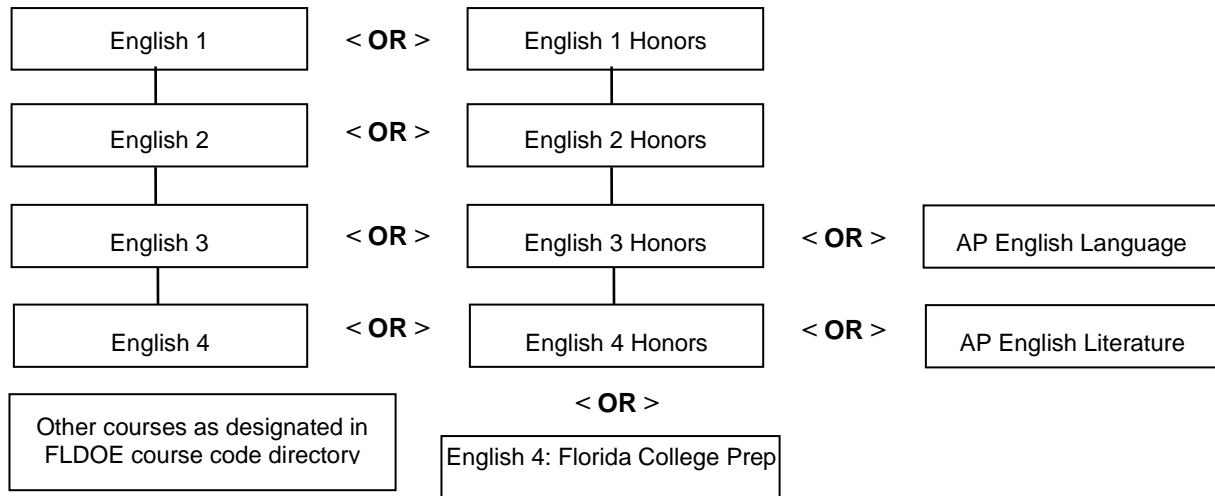
2011-12 – Pass the Algebra 1 EOC to receive course credit. Take the Geometry EOC which counts 30% of the final course grade

2012-13 – Pass the Algebra 1 and Geometry EOC to receive course credit. Receive credit in Algebra 2 (or equivalent courses) to graduate.

For more information on the EOC testing go to <http://fcats.fldoe.org/eoc/>

Students who in grade 10 scored Level 2, 3, or 4 on the 10<sup>th</sup> grade Math FCAT test and who in grade 11 did not achieve the cut score for college readiness on the Postsecondary Readiness Test (PERT) or equivalent test (ACT) as determined by the Florida Department of Education, must complete one of the following courses as determined by the appropriate designated score: Math for College Readiness (1.0 math credit) or Math for College Success (0.5 elective credit).

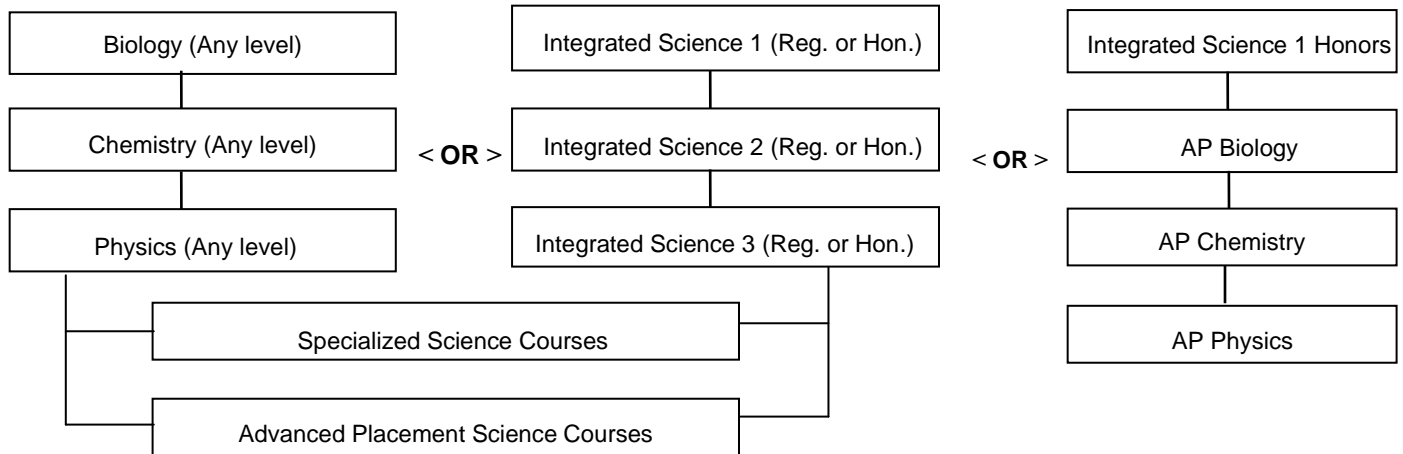
### SENIOR HIGH SCHOOL LANGUAGE ARTS



NOTE: There are four language arts credits required for graduation.

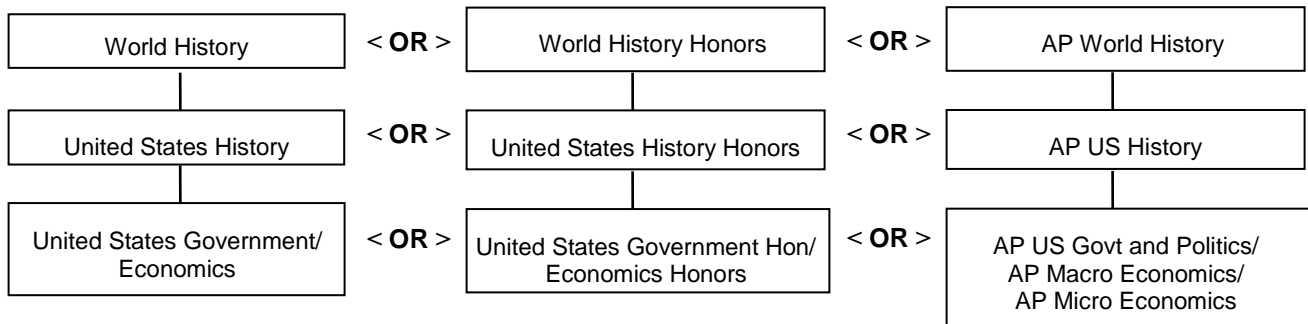
Students who in grade 10 scored Level 2 or 3 on the 10<sup>th</sup> grade Reading FCAT test and who in grade 11 did not achieve the cut score for college readiness on the Postsecondary Readiness Test (PERT) or equivalent test (ACT) as determined by the Florida Department of Education, must complete one or more of the following courses as determined by the appropriate designated score: English 4: Florida College Prep (1.0 English credit) or Reading for College Success (0.5 elective credit) or Writing for College Success (0.5 elective credit).

### SENIOR HIGH SCHOOL SCIENCE



NOTE: Three of the four science credits required for graduation must include (a) one credit each in biology, chemistry, and physics, (b) the three-credit sequence of Integrated Science 1, 2, 3, or (c) the equivalent approved by the Director of Secondary Programs.

## SENIOR HIGH SCHOOL SOCIAL STUDIES



NOTE: Three of the four social studies credits required for graduation must include one credit each in World History, United States History, and United States Government/Economics.

---

## CAREER AND TECHNICAL EDUCATION (CTE)

Career and Technical Education (CTE) includes a variety of programs that focus on providing the skills and experience necessary for students to attain entry-level jobs in a career field, as well as preparation for postsecondary education. Students who participate in CTE have the opportunity to explore career options, develop valuable occupational skills, and earn industry credentials.

Students in grades 9-12 may select from programs that prepare them for employment immediately after graduating from high school or they may choose programs that ready them to enter advanced technical programs at community colleges or other higher education institutions. These courses are linked to academic and industry standards and encourage high achievement.

The unique combination of classroom instruction, laboratory activities and workplace experiences, augmented by an active network of career and technical student organizations, gives students the practical experience in diverse fields i.e., as computer science, health services, retail sales, and high-tech manufacturing.

CTE programs include:

1. Job preparatory courses which provide competencies necessary for effective entry into an occupation;
2. Exploratory courses designed to provide initial exposure to skills and attitudes associated with a broad range of occupations to assist students in making informed decisions regarding their future academic and occupational goals;
3. Practical arts courses designed to teach students practical generic skills which, although applicable in some occupations, are not designed to prepare students for entry into a specific occupation;
4. Instruction that integrates the academic and technical skills; and
5. Accelerated technical programs - dual enrollment - designed to allow high school students to earn both elective credit toward graduation and postsecondary credit toward an A.S. degree or technical certificate.

CTE courses and programs fall into the following major areas of study:


1. **Business Technology Education**, including accounting, web design, digital design, office technology and business management programs.
2. **Health Science Education**, such as nursing assisting and health and wellness.
3. **Family and Consumer Sciences**, which includes consumer and homemaking programs as well as occupational fields such as culinary arts, fashion production, and early childhood education.
4. **Industrial Education**, which includes a wide range of technical/trade areas including TV production, automotive technology, marine service tech, and CAD drafting.
5. **Marketing Education**, including business ownership, general merchandising and management.
6. **Public Service Education**, including criminal justice courses and teacher assisting programs.
7. **Technology Education**, which concerns the materials, processes, and technologies, used in engineering, manufacturing, construction, GIS (Geospatial/Geographic Information Systems), communication, and other industries.

In addition to traditional CTE programs, career academies are available at fourteen high schools. These small personalized learning communities involve a core team of teachers integrating academic subjects with a selected career theme. Students must follow the career academy application process to be eligible to participate.

Gold Seal, a component of Florida's Bright Futures Scholarship Program, rewards students for their academic and technical achievements during high school by providing funding to pursue postsecondary education and career goals in Florida. Students who complete at least three credits in a job preparatory CTE program and meet other academic requirements may qualify for the **Florida Gold Seal Vocational Scholarship**.


A wide variety of CTE programs and technical dual enrollment courses are available on the high school and community college campuses. CTE-CHOICE programs are available to students, through application, in grades 10-12, providing the requested CTE courses are not already offered at their regular high school. Additional information is available at [www.ctebrevard.com](http://www.ctebrevard.com) and is provided by each school through program information inserts.

## High School CTE Program Offerings by Location

|  |  | Astronaut | Bayside | Cocoa | Cocoa Beach | Eau Gallie | Edgewood | Heritage | Melbourne | Merritt Island | Palm Bay | Rockledge | Satellite | Space Coast | Titusville | Viera |
|-----------------------------------------------------------------------------------|--|-----------|---------|-------|-------------|------------|----------|----------|-----------|----------------|----------|-----------|-----------|-------------|------------|-------|
| <b>BUSINESS TECHNOLOGY EDUCATION</b>                                              |  |           |         |       |             |            |          |          |           |                |          |           |           |             |            |       |
| Accounting Operations                                                             |  | ●         |         | ●     | ●           |            |          |          |           |                |          |           |           |             |            |       |
| Administrative Assistant                                                          |  |           |         |       |             |            |          |          | ●         | ●              |          |           | ●         |             |            |       |
| Business Supervision and Management                                               |  |           |         |       |             |            | ●        |          |           |                |          |           |           |             |            |       |
| Digital Design                                                                    |  | ●         | ●       |       |             | ●          |          |          | ●         | ●              | ●        |           |           |             | ●          |       |
| Medical Administrative Specialist                                                 |  |           |         |       |             |            | ●        |          |           |                |          |           |           |             |            |       |
| New Media Technology                                                              |  |           |         |       | ●           |            |          | ●        |           |                |          |           |           |             |            |       |
| PC Support Services                                                               |  | ●         | ●       |       |             |            | ●        |          |           |                |          |           |           |             |            |       |
| Web Design                                                                        |  | ●         | ●       |       | ●           |            |          | ●        | ●         | ●              |          |           |           |             | ●          |       |
| <b>FAMILY &amp; CONSUMER SCIENCES</b>                                             |  |           |         |       |             |            |          |          |           |                |          |           |           |             |            |       |
| Culinary Arts                                                                     |  | ●         | ●       |       |             |            |          | ●        |           | ●              |          |           |           |             | ●          |       |
| Early Childhood Education                                                         |  |           |         |       | ●           |            |          |          | ●         | ●              |          | ●         |           |             | ●          |       |
| Fashion Design Services                                                           |  |           |         | ●     | ●           |            |          | ●        |           | ●              | ●        | ●         |           | ●           |            |       |
| Interior Design Services                                                          |  |           |         |       |             |            | ●        |          |           |                |          |           |           |             |            | ●     |
| Family and Consumer Sciences Semester Courses                                     |  | ●         |         | ●     |             | ●          |          |          | ●         |                | ●        | ●         | ●         | ●           | ●          | ●     |
| Food Science Technology                                                           |  |           |         |       |             |            | ●        | ●        | ●         |                | ●        | ●         | ●         |             |            |       |
| <b>HEALTH SERVICE OCCUPATIONS</b>                                                 |  |           |         |       |             |            |          |          |           |                |          |           |           |             |            |       |
| Dental Aide                                                                       |  |           |         |       |             |            |          |          |           |                |          |           |           |             |            | ●     |
| Health and Wellness                                                               |  | ●         | ●       |       | ●           |            | ●        |          |           |                |          |           |           |             |            |       |
| Nursing Assistant                                                                 |  | ●         | ●       |       |             |            |          | ●        |           | ●              | ●        |           |           |             | ●          |       |
| <b>INDUSTRIAL EDUCATION</b>                                                       |  |           |         |       |             |            |          |          |           |                |          |           |           |             |            |       |
| A/C Refrigeration and Heating                                                     |  |           |         |       |             |            |          |          |           |                |          |           |           | ●           |            |       |
| Automation & Production Technology                                                |  |           |         |       |             |            | ●        |          |           |                |          |           |           |             |            |       |
| Auto Collision Repair/Refinishing                                                 |  |           | ●       |       |             |            |          |          |           |                |          |           |           |             |            |       |
| Automotive Service Technology                                                     |  |           |         |       | ●           |            | ●        |          | ●         |                | ●        | ●         |           | ●           |            |       |
| Drafting                                                                          |  |           |         |       |             |            |          |          |           |                | ●        |           | ●         |             |            |       |
| Marine Service Technology                                                         |  |           |         |       | ●           |            |          |          |           |                |          |           |           |             |            |       |
| Television Production                                                             |  | ●         |         |       |             | ●          |          | ●        |           |                |          |           | ●         | ●           | ●          |       |
| <b>MARKETING EDUCATION</b>                                                        |  |           |         |       |             |            |          |          |           |                |          |           |           |             |            |       |
| Marketing                                                                         |  |           |         | ●     |             |            |          |          | ●         |                |          | ●         | ●         |             |            | ●     |

Office of Career and Technical Education ● (321) 633-1000, ext. 380 ● [www.ctebrevard.com](http://www.ctebrevard.com)

## High School CTE Program Offerings by Location

|                                                        | Astronaut | Bayside | Cocoa | Cocoa Beach | Eau Gallie | Edgewood | Heritage | Melbourne | Merritt Island | Palm Bay | Rockledge | Satellite | Space Coast | Titusville | Viera |
|-----------------------------------------------------------------------------------------------------------------------------------------|-----------|---------|-------|-------------|------------|----------|----------|-----------|----------------|----------|-----------|-----------|-------------|------------|-------|
| <b>PUBLIC SERVICE EDUCATION</b>                                                                                                         |           |         |       |             |            |          |          |           |                |          |           |           |             |            |       |
| Criminal Justice                                                                                                                        |           |         |       |             |            |          |          |           |                | ●        | ●         |           |             |            |       |
| Teacher Assisting                                                                                                                       |           |         |       |             |            |          |          |           |                |          |           |           | ●           |            |       |
| Water Resources Technology                                                                                                              |           |         |       |             |            | ●        |          |           |                |          |           |           |             |            |       |
| <b>TECHNOLOGY EDUCATION</b>                                                                                                             |           |         |       |             |            |          |          |           |                |          |           |           |             |            |       |
| Communications Technology                                                                                                               |           | ●       |       |             |            |          |          |           |                | ●        |           | ●         |             |            | ●     |
| Construction Technology                                                                                                                 | ●         |         |       |             |            |          |          | ●         |                | ●        |           |           |             |            |       |
| Drafting/Illustrative Design Technology                                                                                                 | ●         | ●       | ●     |             | ●          |          | ●        |           | ●              | ●        |           | ●         |             |            |       |
| Engineering Technology                                                                                                                  | ●         | ●       |       |             | ●          |          |          | ●         |                | ●        |           |           | ●           |            |       |
| Geospatial/Geographic Information Systems (GIS)                                                                                         |           |         |       | ●           |            |          |          |           |                |          |           |           |             |            |       |
| Pathways to Engineering-Aerospace                                                                                                       |           |         |       |             |            |          |          |           | ●              |          |           |           |             |            |       |
| <b>POSTSECONDARY/VOCATIONAL DUAL ENROLLMENT</b>                                                                                         |           |         |       |             |            |          |          |           |                |          |           |           |             |            |       |
| Culinary Operations (PSAV)                                                                                                              |           | ●       | ●     |             |            |          |          | ●         |                | ●        |           |           |             | ●          |       |
| Drafting and Design (CCC)                                                                                                               |           |         |       |             | ●          |          |          |           |                |          |           |           |             |            |       |
| Early Childhood Education (CCC)                                                                                                         |           |         |       |             | ●          |          |          |           | ●              | ●        |           | ●         |             |            | ●     |
| Patient Care Assisting (PSAV)                                                                                                           | ●         | ●       |       |             |            |          |          | ●         |                | ●        | ●         |           |             | ●          |       |
| <b>CAREER ACADEMY THEMES</b>                                                                                                            |           |         |       |             |            |          |          |           |                |          |           |           |             |            |       |
| Business and Finance                                                                                                                    | ●         |         |       |             |            |          |          | ●         |                |          |           |           |             |            | ●     |
| Digital Arts & Media                                                                                                                    |           |         |       |             |            |          |          |           |                |          |           |           |             |            | ●     |
| Engineering                                                                                                                             | ●         | ●       |       |             |            |          |          |           | ●              |          |           |           | ●           |            |       |
| Fine Arts                                                                                                                               |           | ●       |       |             | ●          |          |          |           | ●              |          |           | ●         |             |            |       |
| Health Sciences                                                                                                                         | ●         |         |       |             |            |          |          |           |                |          |           |           |             | ●          |       |
| Hospitality & Tourism                                                                                                                   |           |         |       |             |            |          |          |           | ●              |          | ●         |           |             |            |       |
| International Business                                                                                                                  |           |         |       | ●           |            |          |          |           |                |          |           |           |             |            |       |
| Law                                                                                                                                     |           |         |       |             |            |          |          |           |                | ●        | ●         |           |             |            |       |
| Teaching Professions                                                                                                                    |           |         |       |             |            |          |          |           |                |          |           |           | ●           |            |       |
| Technology                                                                                                                              |           |         | ●     |             |            |          |          |           |                | ●        |           |           |             |            |       |
| Water Resources Technology                                                                                                              |           |         |       |             |            | ●        |          |           |                |          |           |           |             |            |       |
| Wellness                                                                                                                                |           |         | ●     |             | ●          | ●        |          |           |                |          |           |           |             |            |       |
| <b>Office of Career and Technical Education</b> ● (321) 633-1000, ext. 380 ● <a href="http://www.ctebrevard.com">www.ctebrevard.com</a> |           |         |       |             |            |          |          |           |                |          |           |           |             |            |       |

## BASIC EDUCATION COURSE DESCRIPTIONS

### Course Numbers, Titles, Content

The course numbers and titles in this guide are taken from the State Course Code Directory. The state assigns and recognizes only the first seven digits of the course number. The eighth digit is utilized by the district for reporting data. The state maintains course descriptions for each course listed in the Course Code Directory; districts develop and adopt student performance standards for each of these courses. Students are expected to demonstrate mastery of these standards in order to receive credit for each course.

### Course Levels

The state of Florida has instituted a course leveling system for 9-12 courses in art, career and technical education, dance, drama, foreign languages, health, language arts (including ESOL), mathematics, music, physical education, science, and social studies. Courses in these areas are designated as Level 1, 2, and 3. **Level 1** courses are not considered adequate preparation for postsecondary education. Students are permitted to take a Level 1 course only when it is determined that the course is the most appropriate placement for the student. Each high school has in place procedures to implement this requirement. **Level 2** courses represent the expected standard for students in the high school. **Level 3** courses are designed for advanced students in each subject area. The course descriptions section in this guide lists the level designations for courses the state has included in the leveling system. Remedial courses such as Intensive Reading and Intensive Math are available to correct deficiencies in subject areas as elective credits.

| Course                                                                                                                                                                                             | State Level | Number   | Description                                                                                                                                                                                                                                                                                                                                                                                          | Meets Req. for                 | Course Length/ Credit |
|----------------------------------------------------------------------------------------------------------------------------------------------------------------------------------------------------|-------------|----------|------------------------------------------------------------------------------------------------------------------------------------------------------------------------------------------------------------------------------------------------------------------------------------------------------------------------------------------------------------------------------------------------------|--------------------------------|-----------------------|
| <b>ART &amp; DRAMA</b>                                                                                                                                                                             |             |          |                                                                                                                                                                                                                                                                                                                                                                                                      |                                |                       |
| All courses listed in this section will meet performing fine arts graduation requirement. Students must demonstrate mastery of appropriate performance standards to receive credit in all courses. |             |          |                                                                                                                                                                                                                                                                                                                                                                                                      |                                |                       |
| Art/2D Comprehensive 1                                                                                                                                                                             | 2           | 0101300X | Shows the student how the basics of art apply to the fine arts, to designer/craftsmen and to the commercial artist. Students will gain an understanding of how art influences the quality of everyday life. They will demonstrate awareness of forms and styles in art and describe how the elements and principles are used in art to make a personal statement.                                    | Performing Fine Arts/ Elective | 1.0 Credit            |
| Art/3D Comprehensive 1                                                                                                                                                                             | 2           | 0101330X | Gives entry level students a basic understanding of three-dimensional art methods, media, techniques, and craftsmanship. Includes hands on basic design and production of 3-D pieces; historical perspectives within context of traditional crafts; criteria development for making aesthetic judgments; concepts of design and craftsmanship; and evaluation by students of their own works of art. | Performing Fine Arts/ Elective | 1.0 Credit            |
| Ceramics/ Pottery 1                                                                                                                                                                                | 2           | 0102300X | Offers the student in-depth opportunity to explore three-dimensional craft and its visual, tactile, and expressive qualities. Contemporary design and aesthetic values shall be established by the creative application of hand built, wheel, and sculpture techniques.                                                                                                                              | Performing Fine Arts/ Elective | 1.0 Credit            |
| Ceramics/ Pottery 2                                                                                                                                                                                | 2           | 0102310X | Gives students an understanding of the ceramic process. Content includes the investigation of the relationship among art elements and compositional principles, the function of ceramics/pottery in society, the                                                                                                                                                                                     | Performing Fine Arts/ Elective | 1.0 Credit            |

| Course                              | State Level | Number   | Description                                                                                                                                                                                                                                                                                                                                                                                                                                                                                                                                       | Meets Req. for                    | Course Length/ Credit |
|-------------------------------------|-------------|----------|---------------------------------------------------------------------------------------------------------------------------------------------------------------------------------------------------------------------------------------------------------------------------------------------------------------------------------------------------------------------------------------------------------------------------------------------------------------------------------------------------------------------------------------------------|-----------------------------------|-----------------------|
|                                     |             |          | history of ceramics/pottery and its relationship to other processes and periods, the criterion for making aesthetic merits of ceramic art, and the practice of successful forming techniques.                                                                                                                                                                                                                                                                                                                                                     |                                   |                       |
| Drawing & Painting 1                | 2           | 0104320X | Acquaints students with the fundamentals of art. The student will develop skills in using media (crayon, craypas, tempera, pen and ink, water color, felt tip), working with stimulus (imaginary scenes, abstractions, geometric forms, still life), understanding elements (line, color, shape, space, volume and texture), and applying principles of art (balance, variation, emphasis, contrast, proportion, rhythm and repetition). <u>This course is open to any student and is considered as preparatory to more advanced art courses.</u> | Performing Fine Arts/<br>Elective | 1.0 Credit            |
| Drawing & Painting 2                | 2           | 0104330X | Extends the experiences of the student from Drawing and Painting I. Continues to emphasize composition and creative visual design in mixed media, color theory, and critical thinking skills as the relationship between the elements and principles of art is studied.                                                                                                                                                                                                                                                                           | Performing Fine Arts/<br>Elective | 1.0 Credit<br>Each    |
| Drawing & Painting 3                | 3           | 0104400X |                                                                                                                                                                                                                                                                                                                                                                                                                                                                                                                                                   |                                   |                       |
| Portfolio 1                         | 2           | 0109310X | Includes an in-depth investigation into various two and/or three dimensional materials and techniques. Emphasis will be placed on the preparation and presentation of individual art portfolios as evidence of student's growth and work. Students compete in juried art exhibits and shows on a local, state, and national level. Admission to these courses is by teacher approval.                                                                                                                                                             | Performing Fine Arts/<br>Elective | 1.0 Credit<br>Each    |
| Portfolio 2                         | 3           | 0109320X |                                                                                                                                                                                                                                                                                                                                                                                                                                                                                                                                                   |                                   |                       |
| Advanced Placement Studio Art / 2-D | 3           | 01093505 | Addresses a very broad interpretation of two-dimensional design issues. This type of design involves purposeful decision making about how to use the elements and principles of art in an integrative way. It is for the advanced student who wishes to seed AP credit through submitting a Portfolio of work for consideration by the College Board.                                                                                                                                                                                             | Performing Fine Arts/<br>Elective | 1.0 Credit            |
| <b>WORLD LANGUAGES</b>              |             |          |                                                                                                                                                                                                                                                                                                                                                                                                                                                                                                                                                   |                                   |                       |
| German 1                            | 2           | 0702320X | Enables students to begin acquiring novice-low to novice-mid proficiency in a modern language. Emphasis is placed on conversing, understanding, and presenting information about areas of immediate need and interest. Cross-cultural understanding, connections with other subject area disciplines, and the ability to perform in an interdependent society are also stressed.                                                                                                                                                                  | Elective                          | 1.0 Credit<br>Each    |
| Spanish 1                           | 2           | 0708340X |                                                                                                                                                                                                                                                                                                                                                                                                                                                                                                                                                   |                                   |                       |
| German 2                            | 2           | 0702330X | Enables students to continue acquiring novice-mid to novice-high proficiency in a modern language. Conversing, understanding, and                                                                                                                                                                                                                                                                                                                                                                                                                 | Elective                          | 1.0 Credit<br>Each    |

| Course                              | State Level | Number   | Description                                                                                                                                                                                                                                                                                                                                                                                                                                    | Meets Req. for | Course Length/ Credit |
|-------------------------------------|-------------|----------|------------------------------------------------------------------------------------------------------------------------------------------------------------------------------------------------------------------------------------------------------------------------------------------------------------------------------------------------------------------------------------------------------------------------------------------------|----------------|-----------------------|
| Spanish 2                           | 2           | 0708350X | presenting information while increasing language proficiency in more areas of content continue to be emphasized and enhanced. Cross-cultural understanding and connections with other subject areas are reinforced. Real-life applications are emphasized. <b>To be successful in upper levels of foreign language study, satisfactory completion of the previous levels or of a district approved examination for placement is necessary.</b> |                |                       |
| German 3                            | 3           | 07023404 | Continues to enhance proficiency in a modern language to a novice-high, intermediate-low level. Emphasis on conversing, understanding, and presenting information continues with an expanded exposure to literature in the target language and Cross-cultural understanding.                                                                                                                                                                   | Elective       | 1.0 Credit Each       |
| Spanish 3                           | 3           | 07083604 |                                                                                                                                                                                                                                                                                                                                                                                                                                                |                |                       |
| Spanish 4                           | 3           | 07083704 | Continues to enhance proficiency in a modern language to an intermediate-low, intermediate-mid level. The students will increase their ability to converse, understand and present information. Exposure to literature in the target language, cross-cultural understanding, connections with other subject areas, and applications to real situations and communities are further emphasized and enhanced.                                    | Elective       | 1.0 Credit Each       |
| Advanced Placement German Language  | 3           | 07023805 | Develops oral and written proficiency in a modern language to an intermediate-high, advanced-low level. The student will comprehend formal and informal spoken language and compose expository passages. The student will also be able to interpret authentic written and spoken texts for possible interpersonal or presentational communication. These courses follow the Advanced Placement Program Guidelines.                             | Elective       | 1.0 Credit Each       |
| Advanced Placement Spanish Language | 3           | 07084005 |                                                                                                                                                                                                                                                                                                                                                                                                                                                |                |                       |
| Latin 1                             | 2           | 0706300X | Introduces the student to fundamental Latin vocabulary and grammar and to classical culture. Includes English derivatives and vocabulary based on Latin; basic grammatical structures of Latin; simple stories for comprehension, including their translation into English; classical heroes and legends, with special attention to classical myths; and selected aspects of life in a Roman family.                                           | Elective       | 1.0 Credit            |
| Latin 2                             | 2           | 0706310X | Provides an intensive study of the Latin language and the Roman history and culture. Instruction includes the grammar and vocabulary necessary for the reading and appreciation of Latin authors, particularly Caesar's writings. Reading is designed to increase the student's understanding of sentence structure, English word-origin, and Roman history and customs.                                                                       | Elective       | 1.0 Credit            |

| Course                                                                                                                                                                                                                                                                                                                                                                                                                                                                                                                                                                                                                                                                                                                                                                                                                                                                                                                                                             | State Level | Number   | Description                                                                                                                                                                                                                                                                                                                                                                                                                                                                                                                                                                                                                                                                                                                                              | Meets Req. for | Course Length/ Credit |
|--------------------------------------------------------------------------------------------------------------------------------------------------------------------------------------------------------------------------------------------------------------------------------------------------------------------------------------------------------------------------------------------------------------------------------------------------------------------------------------------------------------------------------------------------------------------------------------------------------------------------------------------------------------------------------------------------------------------------------------------------------------------------------------------------------------------------------------------------------------------------------------------------------------------------------------------------------------------|-------------|----------|----------------------------------------------------------------------------------------------------------------------------------------------------------------------------------------------------------------------------------------------------------------------------------------------------------------------------------------------------------------------------------------------------------------------------------------------------------------------------------------------------------------------------------------------------------------------------------------------------------------------------------------------------------------------------------------------------------------------------------------------------------|----------------|-----------------------|
| Latin 3                                                                                                                                                                                                                                                                                                                                                                                                                                                                                                                                                                                                                                                                                                                                                                                                                                                                                                                                                            | 3           | 07063204 | Reviews and expands the essentials of Latin grammar; readings in prose; the study of the Roman civilization through its literature with emphasis on politics, history and mythology; and intensive derivative study to refine the student's English vocabulary.                                                                                                                                                                                                                                                                                                                                                                                                                                                                                          | Elective       | 1.0 Credit            |
| <b>JROTC</b>                                                                                                                                                                                                                                                                                                                                                                                                                                                                                                                                                                                                                                                                                                                                                                                                                                                                                                                                                       |             |          |                                                                                                                                                                                                                                                                                                                                                                                                                                                                                                                                                                                                                                                                                                                                                          |                |                       |
| Junior Reserve Officers Training Corps                                                                                                                                                                                                                                                                                                                                                                                                                                                                                                                                                                                                                                                                                                                                                                                                                                                                                                                             | 2           | Varies   | Provides a means of self-analysis, basis for developing self-discipline, good citizenship, and character. <u>Each school's program is described on the insert sheets.</u> This program, open to both men and women, is designed to develop leadership potential for use in all fields of endeavor.                                                                                                                                                                                                                                                                                                                                                                                                                                                       | Elective       | 1.0 Credit            |
| <b>LANGUAGE ARTS</b>                                                                                                                                                                                                                                                                                                                                                                                                                                                                                                                                                                                                                                                                                                                                                                                                                                                                                                                                               |             |          |                                                                                                                                                                                                                                                                                                                                                                                                                                                                                                                                                                                                                                                                                                                                                          |                |                       |
| <p>Central to the language arts program is the effective and meaningful use of reading, writing and speaking, listening and observing. The student is assisted in deriving and constructing meaning from the world of language. Reading and communicative strategies are taught to create fully literate and independent learners. The student learns to understand the nature and power of language and learns to respond critically to a variety of literary genres. Exploring the worlds of both print and technology, the student uses research for both written and oral products. Language arts affords and demands critical thinking skills from all students. Benchmarks for the Sunshine State Standards are repeated as needed in course sequences. As students progress from one course to the next, increases should occur in the complexity of materials and tasks and in the students' independence in the application of skills and strategies.</p> |             |          |                                                                                                                                                                                                                                                                                                                                                                                                                                                                                                                                                                                                                                                                                                                                                          |                |                       |
| Intensive Reading                                                                                                                                                                                                                                                                                                                                                                                                                                                                                                                                                                                                                                                                                                                                                                                                                                                                                                                                                  | N/A         | 1000410X | Provides intervention in the area of reading to increase students' ability to decode, comprehend and think critically about text. High school students in <b>grades 9-10</b> who scored a Level 1 or 2 on the most recent FCAT 2.0 Reading must be placed in Intensive Reading unless they scored a Level 3 or higher for the previous three years. High school students in <b>grades 11-12</b> who scored a Level 1 or 2 on the most recent FCAT 2.0 Reading must be placed in Intensive Reading.                                                                                                                                                                                                                                                       | Elective       | Multiple              |
| English 1                                                                                                                                                                                                                                                                                                                                                                                                                                                                                                                                                                                                                                                                                                                                                                                                                                                                                                                                                          | 2           | 1001310X | Provides integrated educational experiences in reading, writing, listening, viewing, speaking, language and literature. The student will: 1) use reading strategies to construct meaning from a range of technical, informative and literary texts; 2) use process writing strategies to meet the needs of a variety of audiences, writers, and types of information being communicated; 3) select and use appropriate speaking, listening and viewing skills to clarify and interpret meaning in both formal and informal situations; 4) understand the common features of a variety of literary forms; 5) respond critically and aesthetically to literature; 6) demonstrate understanding and use of appropriate language for effective visual, oral, | English        | 1.0 Credit Each       |
| English Honors 1                                                                                                                                                                                                                                                                                                                                                                                                                                                                                                                                                                                                                                                                                                                                                                                                                                                                                                                                                   | 3           | 10013204 |                                                                                                                                                                                                                                                                                                                                                                                                                                                                                                                                                                                                                                                                                                                                                          |                |                       |
| English 2                                                                                                                                                                                                                                                                                                                                                                                                                                                                                                                                                                                                                                                                                                                                                                                                                                                                                                                                                          | 2           | 1001340X |                                                                                                                                                                                                                                                                                                                                                                                                                                                                                                                                                                                                                                                                                                                                                          |                |                       |
| English Honors 2                                                                                                                                                                                                                                                                                                                                                                                                                                                                                                                                                                                                                                                                                                                                                                                                                                                                                                                                                   | 3           | 10013504 |                                                                                                                                                                                                                                                                                                                                                                                                                                                                                                                                                                                                                                                                                                                                                          |                |                       |
| English 3                                                                                                                                                                                                                                                                                                                                                                                                                                                                                                                                                                                                                                                                                                                                                                                                                                                                                                                                                          | 2           | 1001370X |                                                                                                                                                                                                                                                                                                                                                                                                                                                                                                                                                                                                                                                                                                                                                          |                |                       |
| English Honors 3                                                                                                                                                                                                                                                                                                                                                                                                                                                                                                                                                                                                                                                                                                                                                                                                                                                                                                                                                   | 3           | 10013804 |                                                                                                                                                                                                                                                                                                                                                                                                                                                                                                                                                                                                                                                                                                                                                          |                |                       |
| English 4                                                                                                                                                                                                                                                                                                                                                                                                                                                                                                                                                                                                                                                                                                                                                                                                                                                                                                                                                          | 2           | 1001400X |                                                                                                                                                                                                                                                                                                                                                                                                                                                                                                                                                                                                                                                                                                                                                          |                |                       |
| English Honors 4                                                                                                                                                                                                                                                                                                                                                                                                                                                                                                                                                                                                                                                                                                                                                                                                                                                                                                                                                   | 3           | 10014104 |                                                                                                                                                                                                                                                                                                                                                                                                                                                                                                                                                                                                                                                                                                                                                          |                |                       |

| Course                                                | State Level | Number   | Description                                                                                                                                                                                                                                                                                                                                                                                                                                                                                                                                                                                                                                                              | Meets Req. for              | Course Length/ Credit |
|-------------------------------------------------------|-------------|----------|--------------------------------------------------------------------------------------------------------------------------------------------------------------------------------------------------------------------------------------------------------------------------------------------------------------------------------------------------------------------------------------------------------------------------------------------------------------------------------------------------------------------------------------------------------------------------------------------------------------------------------------------------------------------------|-----------------------------|-----------------------|
|                                                       |             |          | and written communication; 7) select and use a variety of electronic media to create, revise, retrieve, and verify information; 8) demonstrate understanding of the impact of mass media and the regulations that govern its use.<br><br>Brevard schools generally structure English 2 courses around World Literature and English 3 courses around American Literature. English 4 courses are usually structured around British Literature or Contemporary Literature/ Writing.<br><br>Honors level courses are for students seeking the demands of an advanced curriculum; work in and out of class will challenge the student to produce with more depth and breadth. |                             |                       |
| English 4: Florida College Prep                       | 2           | 1001405X | Provides an opportunity for identified students to demonstrate reading and writing postsecondary readiness.                                                                                                                                                                                                                                                                                                                                                                                                                                                                                                                                                              | English                     | 1.0 Credit            |
| Advanced Placement English Language and Composition   | 3           | 10014205 | Provides students with an understanding of the semantic, structural, and rhetorical resources of the English language, as they relate to the principles of effective writing.                                                                                                                                                                                                                                                                                                                                                                                                                                                                                            | English                     | 1.0 Credit            |
| Advanced Placement English Literature and Composition | 3           | 10014305 | Develops students' awareness and sharpens their skills in effective writing, critical thinking, and critical reading. The emphasis is upon preparing students for more specialized studies in English and American literature, and upon building skills in writing expository prose.                                                                                                                                                                                                                                                                                                                                                                                     | English                     | 1.0 Credit            |
| Journalism 1                                          | 2           | 1006300X | Provides instruction in writing and production skills related to various journalistic media.                                                                                                                                                                                                                                                                                                                                                                                                                                                                                                                                                                             | Practical Arts/<br>Elective | 1.0 Credit<br>Each    |
| Journalism 2                                          | 2           | 1006310X | Includes news-gathering and writing; development of editorials; sports and feature articles; electronic design and production; and management of journalistic enterprises.                                                                                                                                                                                                                                                                                                                                                                                                                                                                                               |                             |                       |
| Journalism 4                                          | 3           | 1006330X |                                                                                                                                                                                                                                                                                                                                                                                                                                                                                                                                                                                                                                                                          |                             |                       |
| Reading For College Success                           | 2           | 1008350X | Targets 12th graders whose placement scores are below the established cut score indicating they are not "college ready" in Reading.                                                                                                                                                                                                                                                                                                                                                                                                                                                                                                                                      | Elective                    | 0.5 Credit            |
| Writing For College Success                           | 2           | 1009370X | Targets 12th graders whose placement scores are below the established cut score indicating they are not "college ready" in Writing.                                                                                                                                                                                                                                                                                                                                                                                                                                                                                                                                      | Elective                    | 0.5 Credit            |
| <b>MATHEMATICS</b>                                    |             |          |                                                                                                                                                                                                                                                                                                                                                                                                                                                                                                                                                                                                                                                                          |                             |                       |
| Algebra 1                                             | 2           | 1200310X | Develops the algebraic concepts and processes that can be used to solve a variety of real-world and mathematical problems.                                                                                                                                                                                                                                                                                                                                                                                                                                                                                                                                               | Algebra I                   | 1.0 Credit            |
| Algebra 1 Honors                                      | 3           | 12003204 | Provides the foundation for success in more advanced mathematics courses. Students will use the real number system and its subsystems; demonstrate understanding of algebraic procedures and symbolism; and demonstrate understanding of the geometry associated with equations.                                                                                                                                                                                                                                                                                                                                                                                         | Algebra I                   | 1.0 Credit            |
| Algebra 2                                             | 2           | 1200330X | Continues the study of algebra and its                                                                                                                                                                                                                                                                                                                                                                                                                                                                                                                                                                                                                                   | Math                        | 1.0 Credit            |

| Course                                       | State Level | Number   | Description                                                                                                                                                                                                                                                                                                                                                                                                                                                                                                                                                                                                           | Meets Req. for | Course Length/ Credit |
|----------------------------------------------|-------------|----------|-----------------------------------------------------------------------------------------------------------------------------------------------------------------------------------------------------------------------------------------------------------------------------------------------------------------------------------------------------------------------------------------------------------------------------------------------------------------------------------------------------------------------------------------------------------------------------------------------------------------------|----------------|-----------------------|
|                                              |             |          | application to other mathematical and scientific fields. Students will use algebraic procedures and symbolism to solve problems; demonstrate an understanding of the geometry associated with functions; and understand algebraic concepts and their relationship to probability.                                                                                                                                                                                                                                                                                                                                     |                |                       |
| Algebra 2 Honors                             | 3           | 12003404 | Continues the study of algebra with an emphasis on applications. Students will use algebraic procedures and symbolism to solve problems; demonstrate an understanding of the geometry associated with functions; and understand algebraic concepts and their relationship to probability.                                                                                                                                                                                                                                                                                                                             | Math           | 1.0 Credit            |
| Algebra 1a                                   | 2           | 1200370X | Develops algebraic concepts and processes that can be used to solve a variety of real world and mathematical problems. Together the two-year sequence of courses have the same requirements as Algebra 1 (1200310).                                                                                                                                                                                                                                                                                                                                                                                                   | Math           | 1.0 Credit Each       |
| Algebra 1b                                   | 2           | 1200380X |                                                                                                                                                                                                                                                                                                                                                                                                                                                                                                                                                                                                                       |                |                       |
| Intensive Mathematics                        | N/A         | 1200400X | Enables students to develop mathematics skills and concepts through remedial instruction and practice.                                                                                                                                                                                                                                                                                                                                                                                                                                                                                                                | Elective       | Multiple              |
| Mathematics for College Success              | 2           | 1200410X | This course is targeted for grade 12 students, whose test scores on the Postsecondary Educational Readiness Test or the ACT are below the established cut scores for mathematics, indicating that they are not yet "college ready" in mathematics. This course incorporates the following: Ratios and Proportional Relationships, Number and Quantities, Algebra, Functions, Expressions and Equations, Geometry, Statistics, Real Number Systems, and the Common Core Standards for High School Modeling. The benchmarks reflect the Florida College Competencies necessary for entry-level college courses.         | Elective       | 0.5 Credit            |
| Advanced Algebra with Financial Applications | 2           | 1200500X | Provides algebra-based, applications-oriented, technology driven course that requires Algebra 1 and Geometry as a prerequisite. The course addresses mathematics topics under seven financial umbrellas: Banking, Investing and Modeling a Business, Employment and Income Taxes, Automobile Ownership, Independent Living, and Retirement Planning and Household Budgeting. Students use a variety of problem solving skills and strategies in real-world contexts. The mathematics topics contained in this course are introduced, developed, and applied in an as-needed format in the financial settings covered. | Math           | 1.0 Credit            |
| Mathematics for College                      | 2           | 1200700X | This course is targeted for grade 12 students, whose test scores on the Postsecondary                                                                                                                                                                                                                                                                                                                                                                                                                                                                                                                                 | Math           | 1.0 Credit            |

| Course                         | State Level | Number   | Description                                                                                                                                                                                                                                                                                                                                                                              | Meets Req. for | Course Length/ Credit |
|--------------------------------|-------------|----------|------------------------------------------------------------------------------------------------------------------------------------------------------------------------------------------------------------------------------------------------------------------------------------------------------------------------------------------------------------------------------------------|----------------|-----------------------|
| Readiness                      |             |          | Educational Readiness Test or the ACT are below the established cut scores for mathematics, indicating that they are not yet “college ready” in mathematics. It is intended to strengthen the skill level of high school seniors who have completed Algebra 1, 2, and Geometry and who wish to pursue credit generating mathematics courses at the college level.                        |                |                       |
| Analysis of Functions          | 3           | 12013104 | Enhances and continues the study of mathematics after Algebra 1 & 2 and Geometry, and provide a college level foundation to students who choose not to pursue a math, science, or technical major.                                                                                                                                                                                       | Math           | 1.0 Credit            |
| Pre-Calculus                   | 3           | 12023404 | Emphasizes the study of functions trigonometry, limits and other skills needed for success in the study of calculus.                                                                                                                                                                                                                                                                     | Math           | 1.0 Credit            |
| Geometry                       | 2           | 1206310X | Emphasizes critical thinking involving the discovery of relationships. Students will learn the fundamental properties of geometry, use geometric models to represent and solve problems, understand the algebra associated with coordinate geometry, and explore the relationships between plane and solid geometry.                                                                     | Math           | 1.0 Credit            |
| Geometry Honors                | 3           | 12063204 | Provides a rigorous and in-depth study of geometry. Students will use geometric models to represent and solve problems; use and understand an axiomatic system; explore relationships between plane and solid geometry; demonstrate an understanding of the algebra associated with coordinate geometry; and be aware of the differences between Euclidean and non-Euclidean geometries. | Math           | 1.0 Credit            |
| Liberal Arts Mathematics       | 2           | 1208300X | Serves as a bridge from Algebra I to Geometry by reviewing algebra skills in the first half of the course and previewing geometry skills in the second half of the course.                                                                                                                                                                                                               | Math           | 1.0 Credit            |
| Advanced Placement Calculus AB | 3           | 12023105 | Provides students an opportunity to study college level mathematics under the guidelines of the College Board Advanced Placement Program. Content follows the outline prescribed by the College Board.                                                                                                                                                                                   | Math           | 1.0 Credit Each       |
| Adv Placement Calculus BC      | 3           | 12023205 |                                                                                                                                                                                                                                                                                                                                                                                          |                |                       |
| Advanced Placement Statistics  | 3           | 12103205 |                                                                                                                                                                                                                                                                                                                                                                                          |                |                       |
| Advanced Topics in Mathematics | 2           | 1298310  | Reinforces and continues the study of mathematics beyond Algebra 2.                                                                                                                                                                                                                                                                                                                      | Math           | 1.0 credit            |

| Course                    | State Level | Number   | Description                                                                                                                                                                                                                                                                                                                                                                                                                                                                                                                                                                                     | Meets Req. for                 | Course Length/ Credit |
|---------------------------|-------------|----------|-------------------------------------------------------------------------------------------------------------------------------------------------------------------------------------------------------------------------------------------------------------------------------------------------------------------------------------------------------------------------------------------------------------------------------------------------------------------------------------------------------------------------------------------------------------------------------------------------|--------------------------------|-----------------------|
| <b>MUSIC</b>              |             |          |                                                                                                                                                                                                                                                                                                                                                                                                                                                                                                                                                                                                 |                                |                       |
| Band 1                    | 2           | 1302300X | Provides opportunities to develop musicianship skills through band and instrumental ensemble performance. Includes developing and refining fundamental skills. <u>Extra rehearsals and performances are required and selected students may be required to perform in the marching band.</u>                                                                                                                                                                                                                                                                                                     | Performing Fine Arts/ Elective | 1.0 Credit Each       |
| Band 2                    | 2           | 1302310X |                                                                                                                                                                                                                                                                                                                                                                                                                                                                                                                                                                                                 |                                |                       |
| Band 3                    | 2           | 1302320X | Serves as the principal performing components of the instrumental division. Purpose is to provide varied levels of instruction focusing on the development of musicianship and technical skills through the study of more advanced band literature. In addition to the development of basic performance techniques, students are exposed to an in-depth study of the elements of music in order to further develop their aesthetic sensibilities. <u>Extra rehearsals and performances are required. Admission is by teacher approval. Students also serve as members of the marching band.</u> | Performing Fine Arts/ Elective | 1.0 Credit Each       |
| Band 4                    | 2           | 1302330X |                                                                                                                                                                                                                                                                                                                                                                                                                                                                                                                                                                                                 |                                |                       |
| Band 5                    | 3           | 1302340X |                                                                                                                                                                                                                                                                                                                                                                                                                                                                                                                                                                                                 |                                |                       |
| Band 6                    | 3           | 1302350X |                                                                                                                                                                                                                                                                                                                                                                                                                                                                                                                                                                                                 |                                |                       |
| Orchestra 1               | 2           | 1302360X | Develops musicianship skills related to the performance of basic orchestra literature. Includes development of fundamental skills, orchestral performance techniques, music literacy and appreciation. <u>Extra rehearsals and performances are required. Admission is by teacher approval.</u>                                                                                                                                                                                                                                                                                                 | Performing Fine Arts/ Elective | 1.0 Credit Each       |
| Orchestra 2               | 2           | 1302370X |                                                                                                                                                                                                                                                                                                                                                                                                                                                                                                                                                                                                 |                                |                       |
| Orchestra 3               | 2           | 1302380X |                                                                                                                                                                                                                                                                                                                                                                                                                                                                                                                                                                                                 |                                |                       |
| Orchestra 4               | 2           | 1302390X |                                                                                                                                                                                                                                                                                                                                                                                                                                                                                                                                                                                                 |                                |                       |
| Orchestra 5               | 3           | 1302400X |                                                                                                                                                                                                                                                                                                                                                                                                                                                                                                                                                                                                 |                                |                       |
| Orchestra 6               | 3           | 1302410X |                                                                                                                                                                                                                                                                                                                                                                                                                                                                                                                                                                                                 |                                |                       |
| Instrumental Techniques 1 | 2           | 1302420X | Provides beginning instrumental instruction in a class situation. Includes instruction in performance techniques related to given instruments with emphasis placed on music fundamentals, technical and listening skills.                                                                                                                                                                                                                                                                                                                                                                       | Performing Fine Arts/ Elective | 1.0 Credit Each       |
| Instrumental Techniques 2 | 2           | 1302430X |                                                                                                                                                                                                                                                                                                                                                                                                                                                                                                                                                                                                 |                                |                       |
| Instrumental Techniques 3 | 2           | 1302440X | Provides intermediate/advanced instruction for solo performance in a class situation. In addition to all of the basic performance techniques utilized in solo performance, emphasis is placed on the development of critical listening skills and aesthetic awareness.                                                                                                                                                                                                                                                                                                                          | Performing Fine Arts/ Elective | 1.0 Credit Each       |
| Instrumental Techniques 4 | 3           | 1302450X |                                                                                                                                                                                                                                                                                                                                                                                                                                                                                                                                                                                                 |                                |                       |
| Jazz Ensemble 1           | 2           | 1302500X | Introduces, develops and applies knowledge of styles and performance techniques of varied contemporary and early jazz literature. Includes tone production, ensemble performance, stylistic interpretation and basic improvisational techniques. <u>Membership is selected from Band 1-6 by audition. Extra rehearsals and performances are required for</u>                                                                                                                                                                                                                                    | Performing Fine Arts/ Elective | 1.0 Credit Each       |
| Jazz Ensemble 2           | 2           | 1302510X |                                                                                                                                                                                                                                                                                                                                                                                                                                                                                                                                                                                                 |                                |                       |
| Jazz Ensemble 3           | 2           | 1302520X |                                                                                                                                                                                                                                                                                                                                                                                                                                                                                                                                                                                                 |                                |                       |
| Jazz Ensemble 4           | 3           | 1302530X |                                                                                                                                                                                                                                                                                                                                                                                                                                                                                                                                                                                                 |                                |                       |

| Course                          | State Level | Number   | Description                                                                                                                                                                                                                                                                                                                                                              | Meets Req. for                 | Course Length/ Credit              |
|---------------------------------|-------------|----------|--------------------------------------------------------------------------------------------------------------------------------------------------------------------------------------------------------------------------------------------------------------------------------------------------------------------------------------------------------------------------|--------------------------------|------------------------------------|
|                                 |             |          | <u>these courses.</u>                                                                                                                                                                                                                                                                                                                                                    |                                |                                    |
| Chorus 1 (Mixed)                | 2           | 1303300X | Provides students with basic vocal production techniques and part-singing. Includes choral performance techniques, musical literacy, appreciation and listening. Designed for students who have limited vocal experience. <u>Extra rehearsals and performances are required.</u>                                                                                         | Performing Fine Arts/ Elective | 1.0 Credit Each                    |
| Chorus 2 (Mixed)                | 2           | 1303310X |                                                                                                                                                                                                                                                                                                                                                                          |                                |                                    |
| Chorus 3                        | 2           | 1303320X | Serves as components of the principal performing group of the vocal division.                                                                                                                                                                                                                                                                                            | Performing Fine Arts/ Elective | 1.0 Credit Each                    |
| Chorus 4                        | 2           | 1303330X | Includes appropriate performance techniques, sight singing, and stylistic interpretation as it relates to the performance of choral literature.                                                                                                                                                                                                                          |                                |                                    |
| Chorus 5                        | 3           | 1303340X | Students will be exposed to further in-depth study of the elements of music making to further develop their aesthetic sensibilities.                                                                                                                                                                                                                                     |                                |                                    |
| Chorus 6                        | 3           | 1303350X | <u>Extra rehearsals and performances are required. Admission is by teacher approval.</u>                                                                                                                                                                                                                                                                                 |                                |                                    |
| Vocal Ensemble 1                | 2           | 1303440X | Is designed for the more advanced student of the choral division. <u>Membership is selected from Chorus 1-6 by audition.</u> Includes development of appropriate vocal performance techniques, stylistic interpretations of a variety of literature, and may include instrumental accompaniment and choreography. <u>Extra rehearsals and performances are required.</u> | Performing Fine Arts/ Elective | 1.0 Credit Each                    |
| Vocal Ensemble 2                | 2           | 1303450X |                                                                                                                                                                                                                                                                                                                                                                          |                                |                                    |
| Vocal Ensemble 3                | 2           | 1303460X |                                                                                                                                                                                                                                                                                                                                                                          |                                |                                    |
| Vocal Ensemble 4                | 3           | 1303470X |                                                                                                                                                                                                                                                                                                                                                                          |                                |                                    |
| Advanced Placement Music Theory | 3           | 13003305 | Parallels basic college level music theory objectives, which include harmonic analysis, part writing, sight singing and musical dictation. Students must be able to demonstrate a visual and aural understanding of basic musical elements and compositional procedures before they can sign up for this course.                                                         | Performing Fine Arts/ Elective | 1.0 Credit                         |
| Musical Theater 1               | 2           | 1300400X | Provides opportunities to study and perform scenes from varied styles of musical theater with special attention to the fundamentals of stage movement, acting, and characterization as related to musical production. Includes the study of musical theater, acting, dance, production, and performance of a musical.                                                    | Performing Fine Arts/ Elective | 3 Wk. Summer Program<br>1.0 Credit |
| Musical Theater 2               | 2           | 1300410X | Provides opportunities to study and perform scenes from various styles of musical theater with special attention to the fundamentals of stage movement, acting, and characterization. Includes music performance, acting and dance, through the production of a musical.                                                                                                 | Performing Fine Arts/ Elective | 3 Wk. Summer Program<br>1.0 Credit |

| Course                                                                                                                                                                                                                                                                                            | State Level | Number   | Description                                                                                                                                                                                                                                                                                                                                                                                                                                                                                                                                                                                                                   | Meets Req. for | Course Length/<br>Credit |
|---------------------------------------------------------------------------------------------------------------------------------------------------------------------------------------------------------------------------------------------------------------------------------------------------|-------------|----------|-------------------------------------------------------------------------------------------------------------------------------------------------------------------------------------------------------------------------------------------------------------------------------------------------------------------------------------------------------------------------------------------------------------------------------------------------------------------------------------------------------------------------------------------------------------------------------------------------------------------------------|----------------|--------------------------|
| <b>PHYSICAL EDUCATION</b>                                                                                                                                                                                                                                                                         |             |          |                                                                                                                                                                                                                                                                                                                                                                                                                                                                                                                                                                                                                               |                |                          |
| In order to comply with federal regulations, no physical education course will be closed to students on the basis of sex; however, some courses may have other requirements. Once students are enrolled in a class, they may be grouped by skills, or by sex, during a contact sport or activity. |             |          |                                                                                                                                                                                                                                                                                                                                                                                                                                                                                                                                                                                                                               |                |                          |
| Beginning Weight Training                                                                                                                                                                                                                                                                         | 2           | 1501340X | Provides students the opportunity to acquire knowledge and skills in weight training that may be used in physical fitness to improve muscular strength and endurance, and enhance their body image. Includes knowledge and assessment of muscular strength and endurance, knowledge of health problems associated with inadequate levels of muscular strength and endurance, knowledge of skeletal muscles, knowledge and application of biomedical and physiological principles to improve and maintain muscular strength and endurance, and knowledge of sound nutritional and safety practices related to weight training. | PE Elective    | 0.5 Credit               |
| Intermediate Weight Training                                                                                                                                                                                                                                                                      | 2           | 1501350X | Stresses the implementation of personal weight-training programs and realization of personal goals.                                                                                                                                                                                                                                                                                                                                                                                                                                                                                                                           | PE Elective    | 0.5 Credit               |
| Advanced Weight Training                                                                                                                                                                                                                                                                          | 3           | 1501360X | Helps students acquire knowledge and skills in power weight training (Olympic and power lifting) and improve or maintain health related physical fitness.                                                                                                                                                                                                                                                                                                                                                                                                                                                                     | PE Elective    | 0.5 Credit               |
| Beginning Power Weight Training                                                                                                                                                                                                                                                                   | 2           | 1501410X |                                                                                                                                                                                                                                                                                                                                                                                                                                                                                                                                                                                                                               | PE Elective    | 0.5 Credit               |
| Comprehensive Fitness                                                                                                                                                                                                                                                                             | 2           | 1501390X | Enables students to develop an understanding of fitness concepts, design a personal fitness program, and develop an individualized level of health-related fitness.                                                                                                                                                                                                                                                                                                                                                                                                                                                           | PE Elective    | 0.5 Credit               |
| Recreational Activities                                                                                                                                                                                                                                                                           | 2           | 1502470X | Enables students to develop knowledge and skills in recreational activities and maintain or improve health-related fitness.                                                                                                                                                                                                                                                                                                                                                                                                                                                                                                   | PE Elective    | 0.5 Credit               |
| Basketball                                                                                                                                                                                                                                                                                        | 2           | 1503310X | Provides students opportunities to acquire knowledge and skills that may be used in recreational pursuits throughout life, and to maintain and improve their physical fitness. Includes in-depth knowledge and application of skills, techniques, strategies, rules, and safety practices necessary to participate in basketball.                                                                                                                                                                                                                                                                                             | PE Elective    | 0.5 Credit               |
| Team Sports 1                                                                                                                                                                                                                                                                                     | 2           | 1503350X | Improves the student's knowledge and application of skills, techniques, strategies, rules, and safety practices. Also provides opportunities to practice good sportsmanship. May include basketball, soccer, softball, volleyball, speedball, flag football, field or street hockey, lacrosse, rugby, and team handball.                                                                                                                                                                                                                                                                                                      | PE Elective    | 0.5 Credit               |
| Team Sports 2                                                                                                                                                                                                                                                                                     | 2           | 1503360X | Provides students opportunities to acquire strategic knowledge of team sports, hone their skills in selected team sports, and maintain                                                                                                                                                                                                                                                                                                                                                                                                                                                                                        | PE Elective    | 0.5 Credit               |

| Course                                       | State Level | Number   | Description                                                                                                                                                                                                                                                                                                                                                                  | Meets Req. for                    | Course Length/ Credit |
|----------------------------------------------|-------------|----------|------------------------------------------------------------------------------------------------------------------------------------------------------------------------------------------------------------------------------------------------------------------------------------------------------------------------------------------------------------------------------|-----------------------------------|-----------------------|
|                                              |             |          | and improve their personal fitness. Strategies of team sports play, skill acquisition, and the maintenance and/or improvement of personal fitness will be stressed.                                                                                                                                                                                                          |                                   |                       |
| Beginning Volleyball                         | 2           | 1505500X | Provides students with opportunities to acquire knowledge of skills in volleyball, a lifetime sport, that can be used to maintain and/or improve their physical fitness.                                                                                                                                                                                                     | PE Elective                       | 0.5 Credit            |
| HOPE - Physical Education Variation          | 2           | 1506320X | Develops and enhances healthy behaviors that influence lifestyle choices, health and fitness. Includes the risk and benefits of varying fitness levels, mental and emotional health, stress management, coping skills, disease prevention and control, and risk factor assessments.<br><b>Meets the one credit Physical Education graduation requirement.</b>                | Physical Education                | 1.0 Credit            |
| <b>RESEARCH AND CRITICAL THINKING SKILLS</b> |             |          |                                                                                                                                                                                                                                                                                                                                                                              |                                   |                       |
| Research 1                                   | 2           | 17003004 | Focuses on scientific processes, experimental design and data collection, analysis and presentation. Successive years will involve a variation and/or study of a progressive nature. These are elective courses and will not satisfy the graduation requirement for science.                                                                                                 | Elective                          | 1.0 Credit Each       |
| Research 2                                   | 2           | 17003104 |                                                                                                                                                                                                                                                                                                                                                                              |                                   |                       |
| Research 3                                   | 2           | 17003204 |                                                                                                                                                                                                                                                                                                                                                                              |                                   |                       |
| Research 4                                   | 2           | 17003304 |                                                                                                                                                                                                                                                                                                                                                                              |                                   |                       |
| Research 5                                   | 2           | 17003404 |                                                                                                                                                                                                                                                                                                                                                                              |                                   |                       |
| Research 6                                   | 2           | 17003504 |                                                                                                                                                                                                                                                                                                                                                                              |                                   |                       |
| Critical Thinking Study Skills               | 2           | 1700370X | Provides students opportunities to develop test taking skills and demonstrates proficiency on standardized tests. Students will study vocabulary and word attack skills, apply critical thinking skills to mathematics, practice overall test taking strategies, and develop an understanding of college entrance examination formats.                                       | Elective                          | 0.5 Credit            |
| Career Research and Decision Making          | 2           | 1700380X | Teaches students the skills necessary to make informed career choices and develop the skills needed to successfully plan and apply for college or a job.                                                                                                                                                                                                                     | Career Research & Decision Making | 0.5 Credit            |
| <b>SCIENCE</b>                               |             |          |                                                                                                                                                                                                                                                                                                                                                                              |                                   |                       |
| Biology 1                                    | 2           | 2000310X | Emphasizes exploratory experiences in the fundamental concepts of life. Includes scientific processes, structure and function of cells, genetics, classification and taxonomy, structure and function of plants and animals, ecological relationships, and biological changes through time. Experimental design and laboratory investigations are integral to these courses. | Science                           | 1.0 Credit Each       |
| Biology 1 Honors                             | 3           | 20003204 |                                                                                                                                                                                                                                                                                                                                                                              |                                   |                       |
| Advanced Placement Biology                   | 3           | 20003405 | Provides college level learning in biology and prepares the high school student to seek credit and/or appropriate placement in college biology courses. Includes molecular and cellular biology, organismal biology and population biology.                                                                                                                                  | Science                           | 1.0 Credit            |
| Anatomy and Physiology                       | 2           | 2000350X | Emphasizes the structure and functions of the components of the human body. Includes                                                                                                                                                                                                                                                                                         | Science Elective                  | 1.0 Credit Each       |

| Course                                   | State Level | Number   | Description                                                                                                                                                                                                                                                                                                                                                                                                                                                                                                                             | Meets Req. for   | Course Length/ Credit |
|------------------------------------------|-------------|----------|-----------------------------------------------------------------------------------------------------------------------------------------------------------------------------------------------------------------------------------------------------------------------------------------------------------------------------------------------------------------------------------------------------------------------------------------------------------------------------------------------------------------------------------------|------------------|-----------------------|
| Anatomy and Physiology Honors            | 3           | 20003604 | cellular processes, organs and tissues, the skeletal, muscular, nervous, cardiovascular, respiratory, digestive, urinary, reproductive systems, and special senses. Laboratory activities are an integral part of this course. .                                                                                                                                                                                                                                                                                                        |                  |                       |
| Advanced Placement Environmental Science | 3           | 20013805 | Provides college level learning in environmental science and prepares the student to seek credit or appropriate placement in college environmental courses. Includes the interrelationships of the natural world, natural and manmade environmental problems, and solutions for resolving or preventing such problems.                                                                                                                                                                                                                  | Science Elective | 1.0 Credit            |
| Experimental Science I                   | 3           | 20023404 | Provides high level knowledge and skills related to experimental research design and scientific methodology.                                                                                                                                                                                                                                                                                                                                                                                                                            | Science Elective | 1.0 Credit Each       |
| Experimental Science II                  | 3           | 20023504 |                                                                                                                                                                                                                                                                                                                                                                                                                                                                                                                                         |                  |                       |
| Experimental Science III                 | 3           | 20023604 |                                                                                                                                                                                                                                                                                                                                                                                                                                                                                                                                         |                  |                       |
| Experimental Science IV                  | 3           | 20023704 |                                                                                                                                                                                                                                                                                                                                                                                                                                                                                                                                         |                  |                       |
| Integrated Science 1                     | 2           | 2002400X | Parallels international science courses and shows relationships among the sciences and with technology and society. Courses emphasize the development of reasoning, observation, and scientific analysis. Includes quantitative and qualitative chemistry, physics, biochemistry, genetics, geology, ecology, space science and evolutionary biology. Experimental design and laboratory investigations are integral to these courses. This sequence addresses all of the <i>Next Generation Sunshine State Standards for Science</i> . | Science          | 1.0 Credit Each       |
| Integrated Science I Honors              | 3           | 20024104 |                                                                                                                                                                                                                                                                                                                                                                                                                                                                                                                                         |                  |                       |
| Integrated Science 2                     | 2           | 2002420X |                                                                                                                                                                                                                                                                                                                                                                                                                                                                                                                                         |                  |                       |
| Integrated Science 2 Honors              | 3           | 20024304 |                                                                                                                                                                                                                                                                                                                                                                                                                                                                                                                                         |                  |                       |
| Integrated Science 3                     | 2           | 2002440X |                                                                                                                                                                                                                                                                                                                                                                                                                                                                                                                                         |                  |                       |
| Integrated Science 3 Honors              | 3           | 20024504 |                                                                                                                                                                                                                                                                                                                                                                                                                                                                                                                                         |                  |                       |
| Forensic Sciences 1                      | 2           | 2002480X | Emphasizes the scientific principles and methodologies used by forensic scientists to solve problems. Includes DNA technology, pathology, toxicology, and societal issues. Scientific inquiry, laboratory investigations, measurement, problem solving, experimental design, data analysis, and safety procedures are integral to this course.                                                                                                                                                                                          | Science Elective | 1.0 Credit            |

| Course                       | State Level | Number   | Description                                                                                                                                                                                                                                                                                                                                                                                                                                                             | Meets Req. for   | Course Length/<br>Credit |
|------------------------------|-------------|----------|-------------------------------------------------------------------------------------------------------------------------------------------------------------------------------------------------------------------------------------------------------------------------------------------------------------------------------------------------------------------------------------------------------------------------------------------------------------------------|------------------|--------------------------|
| AICE Marine Science 1        | 3           | 2002515x | The emphasis throughout is on the understanding of concepts and the application of physical science ideas in novel contexts as well as on the acquisition of knowledge. The course will foster creative thinking and problem-solving skills which are transferable to any future career path. AS Level Physical Science is ideal for students who want to study physical science or a wide variety of related subjects at university, or to follow a career in science. | Science Elective | 1.0 Credit Each          |
| Chemistry 1                  | 2           | 2003340X | Emphasizes the study of composition, properties, and changes associated with matter. Includes measurement, classification and structure of matter, atomic theory, molecules, periodicity, chemical bonding, formula writing, nomenclature, chemical equations, stoichiometry, kinetic theory, gas laws, acids and bases, energy relationships, solids, liquids and solutions. Experimental design and laboratory investigations are an integral part of this course.    | Science          | 1.0 Credit Each          |
| Chemistry 1 Honors           | 3           | 20033504 |                                                                                                                                                                                                                                                                                                                                                                                                                                                                         |                  |                          |
| Advanced Placement Chemistry | 3           | 20033705 | Provides college level learning in chemistry and prepares the student to seek credit and/or appropriate placement in college chemistry courses. Includes structure of matter (atomic theory and atomic structure, chemical bonding, and nuclear chemistry), states of matter (gases, liquids, solids, and solutions), reactions (reaction types, stoichiometry, equilibrium, kinetics, and thermodynamics), and descriptive chemistry.                                  | Science          | 1.0 Credit               |
| Physics 1                    | 2           | 2003380X | Emphasizes the theories and laws governing the interaction of matter, energy, and the forces of nature. Includes mechanics, thermodynamics, wave phenomenon, magnetism, nuclear physics and electricity. Experimental design and laboratory investigations are integral.                                                                                                                                                                                                | Science          | 1.0 Credit Each          |
| Physics 1 Honors             | 3           | 20033904 |                                                                                                                                                                                                                                                                                                                                                                                                                                                                         |                  |                          |
| Advanced Placement Physics B | 3           | 20034205 | Provides college level learning in physics and prepares the student to seek credit and/or appropriate placement in college physics                                                                                                                                                                                                                                                                                                                                      | Science          | 1.0 Credit               |

| Course                                           | State Level | Number   | Description                                                                                                                                                                                                                                                                                                    | Meets Req. for          | Course Length/<br>Credit |
|--------------------------------------------------|-------------|----------|----------------------------------------------------------------------------------------------------------------------------------------------------------------------------------------------------------------------------------------------------------------------------------------------------------------|-------------------------|--------------------------|
|                                                  |             |          | courses. Includes kinetics, Newton's laws of motion, thermodynamics, waves and optics                                                                                                                                                                                                                          |                         |                          |
| AP Physics C: Mechanics, Electricity & Magnetism | 3           | 20034305 | Provides college level learning in physics and prepares the student to seek credit and/or appropriate placement in college physics courses. Includes mechanics, electrostatics, electric circuits, and magnetism.                                                                                              | Science                 | 1.0 Credit               |
| <b>SOCIAL STUDIES</b>                            |             |          |                                                                                                                                                                                                                                                                                                                |                         |                          |
| United States History                            | 2           | 2100310X | Examines the political, economic, religious, military, scientific, and cultural events that have affected the rise and growth of our nation. Emphasis is on events from 1877 to the present.                                                                                                                   | United States History   | 1.0 Credit Each          |
| United States History Honors                     | 3           | 21003204 |                                                                                                                                                                                                                                                                                                                |                         |                          |
| Advanced Placement United States History         | 3           | 21003305 | Uses primary sources and outside readings to explain the political, social and economic forces at work on historical events from the Colonial period to modern times.                                                                                                                                          | United States History   | 1.0 Credit               |
| Economics                                        | 2           | 2102310X | Involves the study of the major characteristics of the mixed market economic system in the United States and their role in this system as producers, consumers, savers, investors, resource owners, voters, and taxpayers.                                                                                     | Economics               | 0.5 Credit Each          |
| Economics Honors                                 | 3           | 21023204 |                                                                                                                                                                                                                                                                                                                |                         |                          |
| Advanced Placement Microeconomics                | 3           | 21023605 | Involves the study of fundamental economic concepts to understand how societies organize themselves to meet the unlimited wants with their limited resources.                                                                                                                                                  | Economics               | 0.5 Credit               |
| Advanced Placement Macroeconomics                | 3           | 21023705 | Examines the choices they must make as producers, consumers, investors, and tax payers in varying economic systems.                                                                                                                                                                                            | Economics               | 0.5 Credit               |
| World Cultural Geography                         | 2           | 2103300X | Acquires an understanding of interrelationships between people and their environments. Develops multicultural understanding and uses geographical concepts and skills to acquire information.                                                                                                                  | Social Studies Elective | 1.0 Credit               |
| United States Government                         | 2           | 2106310X | Examines the American governmental structure and political behavior at the federal, state, and local level. Examines the effect of each level of government upon the individual citizen.                                                                                                                       | United States Govt      | 0.5 Credit Each          |
| United States Government Hon                     | 3           | 21063204 |                                                                                                                                                                                                                                                                                                                |                         |                          |
| AP US Government and Politics                    | 3           | 21064205 | Helps students acquire a critical perspective of politics and government in the United States.                                                                                                                                                                                                                 | United States Govt      | 0.5 Credit               |
| AP Comparative Government and Politics           | 3           | 21064305 | Helps students acquire a critical perspective of politics and government in various countries of the world.                                                                                                                                                                                                    | Social Studies Elective | 0.5 Credit               |
| Law Studies                                      | 2           | 2106350X | Examines the American criminal and civil justice systems and their relationship to the individual and society. Includes origin and necessity of law; the concept of criminal and civil law; elements of criminal, consumer, family and school law; individual rights and responsibilities; and discrimination. | Social Studies Elective | 0.5 Credit               |

| Course                              | State Level | Number   | Description                                                                                                                                                                                                                                                                                                                                                                                                              | Meets Req. for          | Course Length/ Credit |
|-------------------------------------|-------------|----------|--------------------------------------------------------------------------------------------------------------------------------------------------------------------------------------------------------------------------------------------------------------------------------------------------------------------------------------------------------------------------------------------------------------------------|-------------------------|-----------------------|
| Psychology 1                        | 2           | 2107300X | Provides opportunities to examine human development, behavior, and behavioral interactions. Discussions of intelligence, learning, personality patterns, and motivation techniques may be included.                                                                                                                                                                                                                      | Social Studies Elective | 0.5 Credit            |
| Sociology                           | 2           | 2108300X | Examines group interactions and their impact on individuals to better understand the beliefs, values and behavior patterns of others.                                                                                                                                                                                                                                                                                    | Social Studies Elective | 0.5 Credit            |
| World History                       | 2           | 2109310X | Examines the political, social, economic, scientific, and cultural events that have affected human civilizations.                                                                                                                                                                                                                                                                                                        | World History           | 1.0 Credit Each       |
| World History Honors                | 3           | 21093204 |                                                                                                                                                                                                                                                                                                                                                                                                                          |                         |                       |
| Advanced Placement European History | 3           | 21093805 | Examines primary sources to understand the political, economic and geographic connections of events in European history.                                                                                                                                                                                                                                                                                                 | Social Studies Elective | 1.0 Credit            |
| Art History                         | 2           | 01003304 | The purpose of this course is to enable students to develop knowledge of the history and theory of art and the relationship between artist, artwork, and society. Students will research and critique periods, styles, and works of art from early civilizations through the Middle Ages. Emphasis shall be placed on the role of works of art based on subject matter, theme, concept, symbolism, or allegory/metaphor. | Social Studies Elective | 1.0 Credit            |
| World Geography                     | 3           | 2103300  | Students develop multicultural understanding and use geographical concepts and skills to acquire information and systematically apply decision-making processes to real-life situations. They will acquire an understanding of interrelationships between people and their environment.                                                                                                                                  | Social Studies Elective | 1.0 Credit            |
| Global Perspectives                 | 3           | 1700364  | Learners develop research, thinking, reasoning and communication skills by following an approach to analyzing and evaluating arguments and perspectives called the Critical Path. The skills gained through study of Cambridge International AS Level Global Perspectives enable students to meet the demands of twenty first century learning and make a successful transition to study in higher education.            | Elective                | 1.0 Credit            |
| General Paper                       | 3           | 1009360  | The AS General Paper is multi-disciplinary, its subject matter drawn from across the curriculum. The syllabus encourages in candidates the ability to make cross-curricular links; to develop a maturity of thought appropriate to students at this level; and to achieve an understanding and usage of the English language which enables them to                                                                       | English Elective        | 1.0 Credit            |

| Course | State Level | Number | Description                                                                | Meets Req. for | Course Length/<br>Credit |
|--------|-------------|--------|----------------------------------------------------------------------------|----------------|--------------------------|
|        |             |        | express arguments, ideas and opinions in a reflective and academic manner. |                |                          |

## CAREER AND TECHNICAL EDUCATION COURSE DESCRIPTIONS

\*PFA = Performing & Fine Arts Credit

| Course                                        | State Level | Number   | Description                                                                                                                                                                                                                                                                                                                                                                                                                                                                                                      | Meets Req. for    | Course Length/ Credit |
|-----------------------------------------------|-------------|----------|------------------------------------------------------------------------------------------------------------------------------------------------------------------------------------------------------------------------------------------------------------------------------------------------------------------------------------------------------------------------------------------------------------------------------------------------------------------------------------------------------------------|-------------------|-----------------------|
| <b>BUSINESS TECHNOLOGY EDUCATION PROGRAMS</b> |             |          |                                                                                                                                                                                                                                                                                                                                                                                                                                                                                                                  |                   |                       |
| <b>DIGITAL DESIGN</b>                         |             |          |                                                                                                                                                                                                                                                                                                                                                                                                                                                                                                                  |                   |                       |
| Computing for College and Careers             | 2           | 8209020X | Provides a broad foundation of knowledge and skills for employment in digital publishing. Content includes: experiences in computer generated art and text, graphic design, graphic production, electronic design skills, preparation of electronic layouts and illustrations, and electronic scanning, and development of specialized skills in multimedia presentations to include producing compact disks featuring a company's service, product, catalog, or other visual advertising and/or communications. | Elective          | 1.0 credit            |
| Digital Design 1                              | 2           | 8209510X |                                                                                                                                                                                                                                                                                                                                                                                                                                                                                                                  | *PFA/<br>Elective | 1.0 credit            |
| Digital Design 2                              | 3           | 8209520X |                                                                                                                                                                                                                                                                                                                                                                                                                                                                                                                  | *PFA/<br>Elective | 1.0 credit            |
| Digital Design 3                              | 3           | 8209530X |                                                                                                                                                                                                                                                                                                                                                                                                                                                                                                                  | *PFA/<br>Elective | 1.0 credit            |
| <b>WEB DESIGN</b>                             |             |          |                                                                                                                                                                                                                                                                                                                                                                                                                                                                                                                  |                   |                       |
| Computing for College and Careers             | 2           | 8209020X | Provides a broad foundation of knowledge and skills for employment in Web Internet Services. Content includes operating system commands and web document development, design, promotion and scripting. Also, the program focuses on a broad foundation of transferable skills and stresses understanding and demonstration of the elements of the web design industry.                                                                                                                                           | Elective          | 1.0 credit            |
| Web Design 1                                  | 2           | 8207110X |                                                                                                                                                                                                                                                                                                                                                                                                                                                                                                                  | *PFA/<br>Elective | 1.0 credit            |
| Web Design 2                                  | 3           | 8207120X |                                                                                                                                                                                                                                                                                                                                                                                                                                                                                                                  | *PFA/<br>Elective | 1.0 credit            |
| Web Design 3                                  | 3           | 8207130X |                                                                                                                                                                                                                                                                                                                                                                                                                                                                                                                  | *PFA/<br>Elective | 1.0 credit            |
| <b>DIVERSIFIED EDUCATION</b>                  |             |          |                                                                                                                                                                                                                                                                                                                                                                                                                                                                                                                  |                   |                       |
| Guided Workplace Learning                     | 2           | 8300430X | Provides the opportunity to gain practical, first-hand knowledge in broad occupational clusters or industry sectors through a structured intern experience. This course is designed to give students an opportunity to apply knowledge and skills learned in a classroom to actual work situations.                                                                                                                                                                                                              | Elective          | Multiple              |

\*PFA = Performing & Fine Arts Credit

| Course                                        | State Level | Number   | Description                                                                                                                                                                                                                                                                                                                                                                                                                                                                                                                                                                                                | Meets Req. for    | Course Length/Credit      |
|-----------------------------------------------|-------------|----------|------------------------------------------------------------------------------------------------------------------------------------------------------------------------------------------------------------------------------------------------------------------------------------------------------------------------------------------------------------------------------------------------------------------------------------------------------------------------------------------------------------------------------------------------------------------------------------------------------------|-------------------|---------------------------|
| <b>FAMILY AND CONSUMER SCIENCES</b>           |             |          |                                                                                                                                                                                                                                                                                                                                                                                                                                                                                                                                                                                                            |                   |                           |
| <b>CULINARY OPERATIONS</b>                    |             |          |                                                                                                                                                                                                                                                                                                                                                                                                                                                                                                                                                                                                            |                   |                           |
| Culinary Arts 1                               | 2           | 8515210X | Prepares students for employment in restaurants, cafeterias and institutions. Students completing the dual enrollment or high school credit program will earn the ServSafe® Certified Professional Food Manager's certification. Students learn sanitation and safety, culinary terms, use of tools and equipment including knife skills, and will use standardized recipes, basic cooking techniques with an emphasis on stocks and sauces, identification, purchasing, storing and preparing of meats, seafood and poultry, dining room operation and service, menu planning, and garnishing techniques. | Elective          | 1.0 HS Credit             |
| Culinary Arts 2                               | 2           | 8800520X |                                                                                                                                                                                                                                                                                                                                                                                                                                                                                                                                                                                                            | *PFA/<br>Elective | 1.0 HS Credit             |
| Culinary Arts 3                               | 2           | 8800530X |                                                                                                                                                                                                                                                                                                                                                                                                                                                                                                                                                                                                            | *PFA/<br>Elective | 1.0 HS Credit             |
| Culinary Arts 4                               | 3           | 8800540X |                                                                                                                                                                                                                                                                                                                                                                                                                                                                                                                                                                                                            | Elective          | 1.0 HS Credit             |
| Food Production 1, Stocks and Sauces          | N/A         | FSS0208X |                                                                                                                                                                                                                                                                                                                                                                                                                                                                                                                                                                                                            | Elective          | 0.5 HS/<br>3.0 PS Credits |
| Food Production 2, Presentation & Service     | N/A         | FSS0228X |                                                                                                                                                                                                                                                                                                                                                                                                                                                                                                                                                                                                            | *PFA/<br>Elective | 0.5 HS/<br>3.0 PS Credits |
| Pastries and Desserts                         | N/A         | FSS0064X |                                                                                                                                                                                                                                                                                                                                                                                                                                                                                                                                                                                                            | *PFA/<br>Elective | 0.5 HS/<br>3.0 PS Credits |
| Regional Cuisine – American and International | N/A         | FSS0740X |                                                                                                                                                                                                                                                                                                                                                                                                                                                                                                                                                                                                            | Elective          | 0.5 HS/<br>3.0 PS Credits |

PFA = Performing & Fine Arts Credit

| Course                                | State Level | Number   | Description                                                                                                                                                                                                                                                                                                                                                                                                                                                                                                                                                 | Meets Req. for                                  | Course Length/Credit |
|---------------------------------------|-------------|----------|-------------------------------------------------------------------------------------------------------------------------------------------------------------------------------------------------------------------------------------------------------------------------------------------------------------------------------------------------------------------------------------------------------------------------------------------------------------------------------------------------------------------------------------------------------------|-------------------------------------------------|----------------------|
| <b>FASHION DESIGN AND PRODUCTION</b>  |             |          |                                                                                                                                                                                                                                                                                                                                                                                                                                                                                                                                                             |                                                 |                      |
| Design Services Core                  | 2           | 8506405X | Provides a broad foundation and skills in the fashion industry including principles of design, textile characteristics and care, use of fashion tools and equipment, selection of fabric and construction of garments, with a full understanding of the elements and principles of design. Students study the history of fashion, use CAD to create fashion products, and create an original pattern for a garment, create window displays, design costumes, create a personal portfolio, tailor a garment and demonstrate skills to be a design assistant. | *PFA/<br>Elective                               | 1.0 Credit           |
| Principles of Fashion Design Services | 2           | 8506410X |                                                                                                                                                                                                                                                                                                                                                                                                                                                                                                                                                             | *PFA/<br>Elective                               | 1.0 Credit           |
| Pattern Design Techniques             | 2           | 8506420X |                                                                                                                                                                                                                                                                                                                                                                                                                                                                                                                                                             | *PFA/<br>Elective                               | 1.0 Credit           |
| Fashion Design Specialist             | 3           | 8506430X |                                                                                                                                                                                                                                                                                                                                                                                                                                                                                                                                                             | *PFA/<br>Elective                               | 1.0 Credit           |
| <b>FOOD SCIENCE TECHNOLOGY</b>        |             |          |                                                                                                                                                                                                                                                                                                                                                                                                                                                                                                                                                             |                                                 |                      |
| Food Science Technology               | 2           | 8500395X | Provides a hands-on science-based foods and nutrition course that includes experiments and observations of physical and chemical changes in foods, structures and functions of nutrients, and awareness of human physiology. Students experiment in food chemistry labs which include emulsions,                                                                                                                                                                                                                                                            | Elective/<br><b>SSNP 4<sup>th</sup> Science</b> | 1.0 Credit           |

| Course                         | State Level | Number   | Description                                                                                                                                                                                                                            | Meets Req. for                                  | Course Length/ Credit |
|--------------------------------|-------------|----------|----------------------------------------------------------------------------------------------------------------------------------------------------------------------------------------------------------------------------------------|-------------------------------------------------|-----------------------|
|                                |             |          | mixtures, additives & other chemical reactions.                                                                                                                                                                                        |                                                 |                       |
| <b>ELECTIVE COURSES</b>        |             |          |                                                                                                                                                                                                                                        |                                                 |                       |
| Family Dynamics                | 2           | 8500345X | Prepares students for the roles, responsibilities and relationships essential to functional families and to understand the nature, function, and significance of human relationships within the family/individual units.               | Elective                                        | 0.5 Credit            |
| Nutrition and Wellness         | 2           | 8500355X | Provides instruction in the relationship between nutrition and wellness by selecting, preparing, serving and storing food. Using a hands-on approach, students will practice meal management techniques as they apply to food choices. | Elective/<br><b>SSNP 4<sup>th</sup> Science</b> | 0.5 Credit            |
| Principles of Food Preparation | 2           | 8500390X | Provides instruction in food preparation, selection and storage basic food preparation, and selection of food services.                                                                                                                | Elective                                        | 0.5 Credit            |

\*PFA = Performing & Fine Arts Credit

| Course                                          | State Level | Number   | Description                                                                                                                                                                                                                                                                                                 | Meets Req. for                                          | Course Length/ Credit        |
|-------------------------------------------------|-------------|----------|-------------------------------------------------------------------------------------------------------------------------------------------------------------------------------------------------------------------------------------------------------------------------------------------------------------|---------------------------------------------------------|------------------------------|
| <b>HEALTH SCIENCE EDUCATION</b>                 |             |          |                                                                                                                                                                                                                                                                                                             |                                                         |                              |
| <b>PATIENT CARE ASSISTING - DUAL ENROLLMENT</b> |             |          |                                                                                                                                                                                                                                                                                                             |                                                         |                              |
| Human Service Experience                        | N/A         | SOW1051X | Provides instruction focused on skills and knowledge necessary for completing the national exam for Certified Nursing Assistant.                                                                                                                                                                            | Elective                                                | 0.2 HS/<br>1.0 PS<br>Credit  |
| Basic Healthcare Worker                         | N/A         | HSC0003X | Instruction includes fundamentals of cardiac anatomy and physiology and a systematic approach to EKG interpretation. Includes basic anatomy and physiology, health care delivery system, communication, legal and ethical issues, concepts of wellness and disease, infection control, safety, and CPR.     | Elective                                                | 0.5 HS/<br>3.0 PS<br>Credits |
| Articulated Nursing Assistant                   | N/A         | HCP0121X | Content includes communication, nutrition, physical comfort and safety function, personal patient care, and infection control and provides the opportunity for students to gain skills by working in a hospital and nursing home.                                                                           | Elective                                                | 0.5 HS/<br>3.0 PS<br>Credits |
| Advanced Home Health Aid                        | N/A         | HCP0332X | Provides information on the health care delivery systems with emphasis on health occupations, communication skills, legal and ethical responsibilities, wellness and disease concepts, infection control procedures, CPR, first aid and safety and employability skills relevant to the health care worker. | Elective                                                | 0.3 HS/<br>2.0PS<br>Credits  |
| Patient Care Assistant                          | N/A         | HCP0020X | Introduces the language of medicine.                                                                                                                                                                                                                                                                        | Elective                                                | 0.5 HS/<br>3.0 PS<br>Credits |
| Introduction to Health Care                     | N/A         | HSC1000X |                                                                                                                                                                                                                                                                                                             | Elective                                                | 0.5 HS/<br>3.0 PS<br>Credits |
| Advanced Medical Terminology                    | N/A         | HSC1532X |                                                                                                                                                                                                                                                                                                             | Elective                                                | 0.5 HS/<br>3.0 PS<br>Credits |
|                                                 |             |          |                                                                                                                                                                                                                                                                                                             | <b>Program completion = 4<sup>th</sup> SSNP science</b> |                              |

| Course                      | State Level | Number | Description | Meets Req. for | Course Length/ Credit |
|-----------------------------|-------------|--------|-------------|----------------|-----------------------|
| <b>TECHNOLOGY EDUCATION</b> |             |        |             |                |                       |

\*PFA = Performing & Fine Arts Credit

|                                      |   |          |                                                                                                                                                                                                                                                                                                                                                                                                                                                                                                                                                                                                                                                                                                                                                                                                                                           |          |            |
|--------------------------------------|---|----------|-------------------------------------------------------------------------------------------------------------------------------------------------------------------------------------------------------------------------------------------------------------------------------------------------------------------------------------------------------------------------------------------------------------------------------------------------------------------------------------------------------------------------------------------------------------------------------------------------------------------------------------------------------------------------------------------------------------------------------------------------------------------------------------------------------------------------------------------|----------|------------|
| <b>INDUSTRIAL EDUCATION</b>          |   |          |                                                                                                                                                                                                                                                                                                                                                                                                                                                                                                                                                                                                                                                                                                                                                                                                                                           |          |            |
| <b>AUTOMOTIVE SERVICE TECHNOLOGY</b> |   |          |                                                                                                                                                                                                                                                                                                                                                                                                                                                                                                                                                                                                                                                                                                                                                                                                                                           |          |            |
| Automotive Service Technology 1      | 2 | 8709410X | Prepares students for employment as automotive technicians, technician helpers, front end technicians, tune-up technicians, and brake technicians. The content includes communication skills, leadership skills, human relations and employability skills, safe and efficient work practices. Training includes automobile repairs, servicing automotive components, systems diagnostics training, the repair and overhaul of brake systems, and basic shop management and safety skills preparing them for ASE (Automotive Service Excellence) credential testing. Laboratory activities are an integral part of this program and provide instruction in troubleshooting and service in the following areas: drive trains; steering, suspension, brakes, and electrical systems; engine systems performance; and automotive accessories. | Elective | 1.0 Credit |
| Automotive Service Technology 2      | 2 | 8709420X |                                                                                                                                                                                                                                                                                                                                                                                                                                                                                                                                                                                                                                                                                                                                                                                                                                           | Elective | 1.0 Credit |
| Automotive Service Technology 3      | 2 | 8709430X |                                                                                                                                                                                                                                                                                                                                                                                                                                                                                                                                                                                                                                                                                                                                                                                                                                           | Elective | 1.0 Credit |
| Automotive Service Technology 4      | 2 | 8709440X |                                                                                                                                                                                                                                                                                                                                                                                                                                                                                                                                                                                                                                                                                                                                                                                                                                           | Elective | 1.0 Credit |
| Automotive Service Technology 5      | 2 | 8709450X |                                                                                                                                                                                                                                                                                                                                                                                                                                                                                                                                                                                                                                                                                                                                                                                                                                           | Elective | 1.0 Credit |

\*PFA = Performing & Fine Arts Credit

| Course                       | State Level | Number   | Description                                                                                                                                                                                                                                                                                                                                                                                                                                                                                                                                                                                                           | Meets Req. for    | Course Length/ Credit |
|------------------------------|-------------|----------|-----------------------------------------------------------------------------------------------------------------------------------------------------------------------------------------------------------------------------------------------------------------------------------------------------------------------------------------------------------------------------------------------------------------------------------------------------------------------------------------------------------------------------------------------------------------------------------------------------------------------|-------------------|-----------------------|
| <b>TELEVISION PRODUCTION</b> |             |          |                                                                                                                                                                                                                                                                                                                                                                                                                                                                                                                                                                                                                       |                   |                       |
| Television Production 1      | 2           | 8772110X | Provides a broad foundation and skills for initial employment as television production operators, editors, television broadcast technicians, camera operators, all other professional/para-professional technicians, video recording engineers, audio recording engineers. The content includes, but is not be limited to, communication skills, leadership skills, human relations and employability skills, safe and efficient work practices, and preparation and production of television studio activities including: scripts, lighting, filming and directing, electronic news gathering, and field production. | *PFA/<br>Elective | 1.0 Credit            |
| Television Production 2      | 2           | 8772120X |                                                                                                                                                                                                                                                                                                                                                                                                                                                                                                                                                                                                                       | *PFA/<br>Elective | 1.0 Credit            |
| Television Production 3      | 3           | 8772130X |                                                                                                                                                                                                                                                                                                                                                                                                                                                                                                                                                                                                                       | Elective          | 1.0 Credit            |

**EXCEPTIONAL STUDENT EDUCATION COURSE DESCRIPTIONS**

| <b>Course</b>                  | <b>State Level</b> | <b>Number</b> | <b>Description</b>                                                                                                                                                                                                                                                                                                                                                                                                         | <b>Meets Req. for</b>        | <b>Course Length/<br/>Credit</b> |
|--------------------------------|--------------------|---------------|----------------------------------------------------------------------------------------------------------------------------------------------------------------------------------------------------------------------------------------------------------------------------------------------------------------------------------------------------------------------------------------------------------------------------|------------------------------|----------------------------------|
| <b>ACADEMICS–SUBJECT AREAS</b> |                    |               |                                                                                                                                                                                                                                                                                                                                                                                                                            |                              |                                  |
| Reading: 9-12                  | N/A                | 7910100E      | Enables students with disabilities to apply the knowledge and skills needed to design and implement personal plans for achieving their desired post-school outcomes. The personal plans may address all critical transition service areas, including instruction, related services, community experiences, employment, post-school adult living, and, if needed, daily living skills and functional vocational evaluation. | ESE<br>Language<br>Arts      | Multiple                         |
| English: 9-12                  | N/A                | 7910110E      |                                                                                                                                                                                                                                                                                                                                                                                                                            |                              | Multiple                         |
| Access English 1/2             | N/A                | 7910111E      |                                                                                                                                                                                                                                                                                                                                                                                                                            |                              |                                  |
| Access English 3/4             | N/A                | 7910112E      |                                                                                                                                                                                                                                                                                                                                                                                                                            |                              |                                  |
| Access Informal Geometry       | N/A                | 7912060E      | Is intended only for students with a significant cognitive disability. The purpose of this course is to develop the geometric concepts and processes that can be used to analyze and solve a variety of routine and non-routine real-world and mathematical problems.                                                                                                                                                      | ESE Math                     | 2 years                          |
| Access Liberal Arts Math       | N/A                | 7912070E      | Is intended only for students with a significant cognitive disability. The purpose of this course is to develop the algebraic and geometric concepts and processes that can be used to analyze and solve a variety of routine and non-routine real-world and mathematical problems.                                                                                                                                        | ESE Math                     | 2 years                          |
| Access Algebra 1A              | N/A                | 7912080E      | Is intended only for students with a significant cognitive disability. The purpose of these courses is to develop the algebraic concepts and processes that can be used to analyze and solve a variety of routine and non-routine real-world and mathematical problems.                                                                                                                                                    | ESE Math                     | 2 years                          |
| Access Algebra 1B              |                    | 7912090E      |                                                                                                                                                                                                                                                                                                                                                                                                                            |                              |                                  |
| Access Chemistry 1             | N/A                | 792011E       | Provides students with significant cognitive disabilities access to the concepts and content of Chemistry.                                                                                                                                                                                                                                                                                                                 | ESE Science                  | 2 years                          |
| Access Biology 1               | N/A                | 7902015E      | Provides students with significant cognitive disabilities access to the concepts and content of Biology.                                                                                                                                                                                                                                                                                                                   | ESE Science                  | 2 years                          |
| Access Earth/Space Science 1   | N/A                | 7920020E      | Provides students with significant cognitive disabilities access to the concepts and content of Earth Space Science.                                                                                                                                                                                                                                                                                                       | ESE Science                  | 2 years                          |
| Access Integrated Science 1    | N/A                | 7920025E      | Provides students with significant cognitive disabilities access to the concepts and content of Integrated Science.                                                                                                                                                                                                                                                                                                        | ESE Science                  | 2 years                          |
| Social Studies: 9-12           | N/A                | 7921010E      | Provides students with significant cognitive disabilities access to the concepts and content of Social Studies including Economics, World History, American History and American Government.                                                                                                                                                                                                                               | ESE<br>Social<br>Studies     | Multiple                         |
| Access US Govt                 | N/A                | 7921015E      |                                                                                                                                                                                                                                                                                                                                                                                                                            |                              |                                  |
| Access Econ                    | N/A                | 7921020E      |                                                                                                                                                                                                                                                                                                                                                                                                                            |                              |                                  |
| Access H.O.P.E. 9-12           | N/A                | 7915015E      | Enables students with Disabilities to develop healthy behaviors that influence health and fitness, mental and emotional health, stress management, coping skills, disease prevention and control.                                                                                                                                                                                                                          | ESE<br>Physical<br>Education | 1 Year                           |

| Course                                                        | State Level | Number   | Description                                                                                                                                                                                                                                                    | Meets Req. for | Course Length/ Credit |
|---------------------------------------------------------------|-------------|----------|----------------------------------------------------------------------------------------------------------------------------------------------------------------------------------------------------------------------------------------------------------------|----------------|-----------------------|
| Life Management and Transition: 9-12                          | N/A         | 7960010E | Enables students with disabilities to function at their highest levels and prepare to participate effectively in post-school adult living and the world of work.                                                                                               | ESE Life Manag | Multiple              |
| <b>SUPPORTED LEVEL: 9-12</b>                                  |             |          |                                                                                                                                                                                                                                                                |                |                       |
| Personal & Home Skills for Functional Living                  | N/A         | 7961030E | Enables students with disabilities to function at their highest levels and prepare to participate effectively in the home, in the community, and in the workplace.                                                                                             | ESE Elective   | Multiple              |
| Leisure and Recreation Skills for Functional Living           | N/A         | 7961040E |                                                                                                                                                                                                                                                                | ESE Elective   | Multiple              |
| Community & Social Skills for Functional Living               | N/A         | 7961050E |                                                                                                                                                                                                                                                                | ESE Elective   | Multiple              |
| <b>PARTICIPATORY LEVEL: 9-12</b>                              |             |          |                                                                                                                                                                                                                                                                |                |                       |
| Cognitive and Linguistic Skills                               | N/A         | 7962010E | Enables students with disabilities to function at their highest levels and develop the ability to transmit or receive information, thoughts, or feelings through a communication system.                                                                       | ESE Elective   | Multiple              |
| Life Sustaining & Environmental Interaction Skills            | N/A         | 7962020E | Enables students with disabilities to function at their highest levels and as fully as possible within the home, school, and community settings.                                                                                                               | ESE Elective   | Multiple              |
| Leisure/ Recreation Skills for Improvement of Quality of Life | N/A         | 7962030E | Enables students with disabilities to function at their highest levels and participate in appropriate leisure and recreational activities based upon individual capabilities and acceptability.                                                                | ESE Elective   | Multiple              |
| Developmental-Functional Motor and Sensory Skills             | N/A         | 7962040E | Enables students with disabilities to function at their highest levels and improve motor and sensory skills through interaction with environmental stimuli.                                                                                                    | ESE Elective   | Multiple              |
| <b>SPECIAL SKILLS COURSES</b>                                 |             |          |                                                                                                                                                                                                                                                                |                |                       |
| Skills for Students who are Deaf or Hard of Hearing           | N/A         | 7963040E | Enhances the acquisition, comprehension, and use of language for students who are deaf or hard of hearing.                                                                                                                                                     | ESE Elective   | Multiple              |
| Skills for Students who are Visually Impaired                 | N/A         | 7963050E | Provides instruction for students who have visual impairments, which affect their ability to function in the home, community, or educational setting.                                                                                                          | ESE Elective   | Multiple              |
| Orientation and Mobility Skills                               | N/A         | 7963060E | Provides instruction in skills involving orientation and mobility. Orientation is the collection and organization of information concerning the environment and one's relationship to it. Mobility is the ability to move efficiently within that environment. | ESE Elective   | Multiple              |
| Social & Personal Skills                                      | N/A         | 7963070E | Provides instruction related to environmental, interpersonal, and task-related behavior of students with disabilities.                                                                                                                                         | ESE Elective   | Multiple              |

| Course                                                               | State Level | Number   | Description                                                                                                                                                                                                                                                                                                                | Meets Req. for  | Course Length/Credit |
|----------------------------------------------------------------------|-------------|----------|----------------------------------------------------------------------------------------------------------------------------------------------------------------------------------------------------------------------------------------------------------------------------------------------------------------------------|-----------------|----------------------|
| Learning Strategies                                                  | N/A         | 7963080E | Enables students with disabilities to acquire and use strategies and skills to enhance their independence as learners in educational and community settings.                                                                                                                                                               | ESE Elective    | Multiple             |
| <b>MISCELLANEOUS</b>                                                 |             |          |                                                                                                                                                                                                                                                                                                                            |                 |                      |
| Studies for Students Who Are Gifted                                  | N/A         | 7965040E | Provides appropriately individualized curricula for students who are gifted.                                                                                                                                                                                                                                               | ESE Elective    | Multiple             |
| <b>THERAPY</b>                                                       |             |          |                                                                                                                                                                                                                                                                                                                            |                 |                      |
| Physical Therapy                                                     | N/A         | 7966010E | Provides instruction to students with disabilities who have physically disabling conditions, including sensorimotor or neuromuscular deficits, which substantially limit one or more major life activities and require adaptation of the school environment or curriculum in order to benefit from an educational program. | N/A             | N/A                  |
| Occupational Therapy                                                 |             | 7966020E | Provides instruction to students with disabilities whose physical, motor, or neurological deficits result in significant dysfunction in daily living or academic learning skills to the extent that they require adaptation of the school environment or curriculum in order to benefit from an educational program.       | N/A             | N/A                  |
| Speech Therapy                                                       |             | 7966030E | Provides students exhibiting language/communication disorders that negatively impact their ability to benefit from the educational process appropriate instruction in language skills, both oral and written, necessary for academic learning, social interaction, and vocational success.                                 | N/A             | N/A                  |
| Language Therapy                                                     |             | 7966040E |                                                                                                                                                                                                                                                                                                                            | N/A             | N/A                  |
| <b>CAREER AND TECHNICAL EDUCATION FOR STUDENTS WITH DISABILITIES</b> |             |          |                                                                                                                                                                                                                                                                                                                            |                 |                      |
| Practical Arts Education                                             | N/A         | 7980020E | Enables students with disabilities to obtain broad practical skills and a basic introduction to broad occupational areas, and to stimulate personal aptitudes, abilities, and interests in specific occupational fields as part of the career decision-making process.                                                     | ESE Elective    | Multiple             |
| Career Preparation                                                   | N/A         | 7980110E | Enables students with disabilities to use the career knowledge and skills necessary to identify career options, access community resources, and apply work-related behaviors. Provides a foundation for further progress toward achieving the student's desired post-school outcomes related to a career.                  | ESE Career Prep | Multiple             |
| Career Experiences                                                   | N/A         | 7980120E | Enables students with disabilities to further develop the career knowledge and skills necessary to identify career options, access community resources, and practice work-related behaviors. Provides guided practice and experiences in school and community work situations aimed at further progress toward             | ESE Elective    | Multiple             |

| <b>Course</b>    | <b>State Level</b> | <b>Number</b> | <b>Description</b>                                                                                                                                                                                                                                                                                                                                   | <b>Meets Req. for</b> | <b>Course Length/ Credit</b> |
|------------------|--------------------|---------------|------------------------------------------------------------------------------------------------------------------------------------------------------------------------------------------------------------------------------------------------------------------------------------------------------------------------------------------------------|-----------------------|------------------------------|
|                  |                    |               | achieving the student's desired post-school outcomes related to a career.                                                                                                                                                                                                                                                                            |                       |                              |
| Career Placement | N/A                | 7980130E      | Enables students with disabilities to use the career knowledge and skills necessary to identify career options, access community resources, and apply work-related behaviors. The course will provide placement in a job in the community aimed at further progress toward achieving the student's desired post-school outcomes related to a career. | ESE Elective          | Multiple                     |

NOTE: 7000 core subject area course codes are only to be used when a student had been approved for a special diploma course of study. This includes documentation that the student is eligible for use of the Florida Alternate Assessment (FAA) through the IEP process.

## NONDISCRIMINATION NOTICE

It is the policy of the School Board of Brevard County to offer the opportunity to all **students** to participate in appropriate programs and activities without regard to race, color, gender, religion, national origin, disability, marital status, or age, except as otherwise provided by Federal law or by Florida state law.

A **student** having a grievance concerning discrimination may contact:

Dr. Brian Binggeli  
Superintendent  
Brevard Public Schools

Ms. Cyndi Van Meter  
Associate Superintendent,  
Division of Curriculum  
and Instruction  
Equity Coordinator

Dr. Walter Christy, Director  
Office of Secondary Programs

Ms. Pam Treadwell,  
Director  
ESE Administrative  
Support Services  
ADA/Section 504  
Coordinator

School Board of Brevard County  
2700 Judge Fran Jamieson Way  
Viera, Florida 32940-6601  
(321) 633-1000

It is the policy of the School Board of Brevard County not to discriminate against **employees** or **applicants** for employment on the basis of race, color, religion, sex, national origin, participation and membership in professional or political organizations, marital status, age, or disability. Sexual harassment is a form of employee misconduct which undermines the integrity of the employment relationship, and is prohibited. This policy shall apply to recruitment, employment, transfers, compensation, and other terms and conditions of employment.

An **employee** or **applicant** having a grievance concerning employment may contact:

Ms. Susan Standley, Director  
Office of Compensation & Benefits

Ms. Joy Salamone, Director  
Human Resources Services  
and Labor Relations

School Board of Brevard County  
2700 Judge Fran Jamieson Way  
Viera, Florida 32940-6601  
(321) 633-1000

This publication or portions of this publication can be made available to persons with disabilities in a variety of formats, including large print, Braille or audiotape. Telephone or written requests should include your name, address, and telephone number. Requests should be made to Kim Riddle, Exceptional Education Projects, 633-1000, extension 535, at least two (2) weeks prior to the time you need the publication.